

SYMPHONY

QUARTET

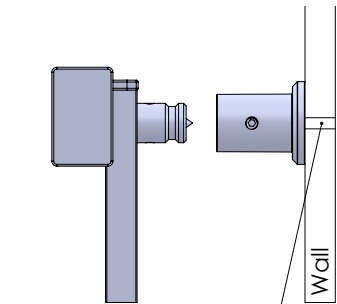
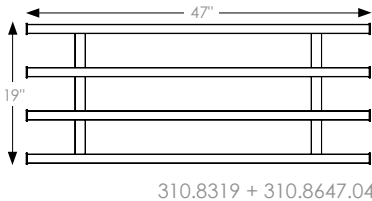
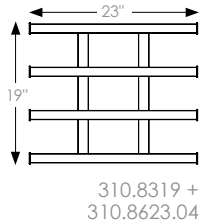
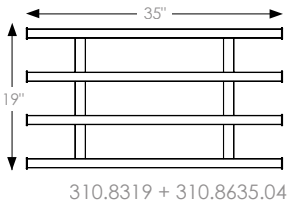
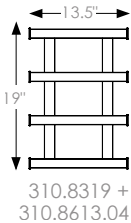
310.8319.xxx

+ 310.8613/23/35/47.04.xxx

FEATURES

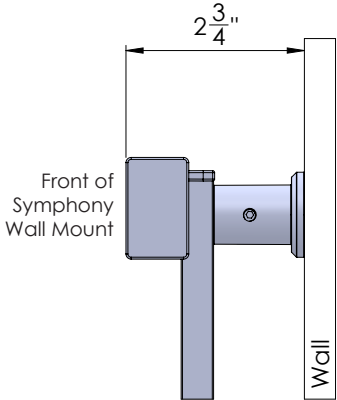
The Quartet is ideal for low-profile, quickly-accessible storage of hanging objects like umbrellas, coats, belts, and backpacks.

Narrower widths mount above vanities or on the sides of cabinets to store jewelry and accessories. The broader widths deliver endless wall-mounted storage options wherever they are needed in the home.



Use 3/16 toggle bolts when assembling to drywall

Use #8 wood screws when assembling to wood



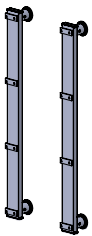
FLEXIBLE INSTALLATION

Attaches quickly and securely into drywall or a vertical panel, no studs required

DIMENSIONS

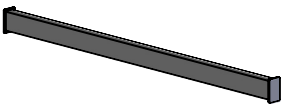
SPECS

VERTICAL MOUNTS (2)



310.8319.^(FINISH)xxx

FAUX LEATHER BARS (4)



310.8613.04.^(FABRIC)xxx

310.8623.04.^(FABRIC)xxx

310.8635.04.^(FABRIC)xxx

310.8647.04.^(FABRIC)xxx

LOAD CAPACITY

The max. load capacity of a Single Horizontal bar is 50lbs, if the load is evenly spread along the bar.

The max. load capacity of a Full System is 200lbs, if the load is evenly spread along the system. (same limitation for all the sizes)

These tests have been performed on a 1/2 inch drywall, using 3-16 heavy duty toggle bolts and 10-24 steel machine screws.

OPTIONS

FINISH:

MAL

MNL

SG

MG

BLK

MATTE ALUMINUM

MATTE NICKEL

SLATE

MATTE GOLD

BLACK

FAUX LEATHER:

WIN

OYS

PWT

WINTER

OYSTER

PEWTER

WIDTH:

13.5"

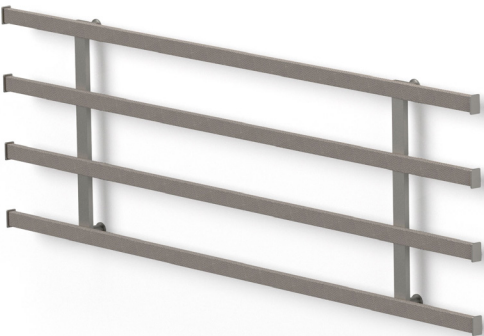
23"

35"

47"

HEIGHT:

19"



310.8319.SG

+ 310.8647.04.PWT

FINISHED PRODUCT