

HÄFELE

Mounting Instructions

HPC Cart

Article # 007.94.000



Description:

HPC Cart

Catalog Number Series:

007.94.000

Finish:

Epoxy Coated Paint

Installation Help Line:

1-800-423-3531

HÄFELE

Häfele America Co. • 3901 Cheyenne Drive • Archdale, NC 27263 • USA

Häfele HPC Cart Instructions and Tips.

Congratulations on your purchase of the best RTA panel cart on the market!
Please follow these instructions and tips to ensure proper assembly of your new cart.

General Construction Tips:

- Before loading your newly constructed HPC Cart, double check all joints, tightening loose nuts and bolts where needed.
- Never use the HPC Cart as a scaffold or any other device used by individuals to climb, sit, lay or otherwise support themselves. The HPC cart was not designed for these uses.
- Assembly of the base section of the HPC cart is easier if the base is first placed on a pair of sawhorses or something similar.
- All bolts should be left slightly loose until the entire unit is assembled. Tighten only as described below.
- When tightening a bolt/nut, hold the head of the bolt securely with a wrench, and turn the nut with a second wrench until tight.

Step One

- Remove all parts from packaging and sort, according to the chart on page 2. Many of the parts are similar and your cart will only function properly will all parts in their position.

Step Two

- Locate the front edge of Panel Handler-Base (part #14). This is the edge closest to the Häfele sticker. Facing the front edge, attach one swivel caster (part #15) under the right front edge of the base by inserting four bolts (part #12) through the base, the caster, followed by washers (part #7) and lock nuts (part #6). These bolts can be tightened at this time. Repeat this on the left front with one of the fixed casters (part #17). Now install the second swivel caster on the right back edge, using only two bolts (part #12) through the holes furthest from the back edge of the base. Add nuts and washers to these bolts, but leave loose. Repeat this on the back left side of the base, with the second fixed caster.

Step Three

- Refer to the exploded view for the proper orientation of the "Outside Tube" (part #10&11) and mount one of each through the remaining caster holes on the rear edge of the base, through the caster, using two bolts (part #18) washers and nuts, leaving them loose for now. Mount the central "Outside Tubes" through the next pair of holes closer to the front of the base, (part #12) and passing through two of the holes in the "Foot Brake" (part #16). Leave these bolts and nuts loose for now.

Step Four

- Mount the Jack (part #19) to the center holes using two bolts (part #18) and washer and nuts. Tighten securely.
- Install the Jack release petal (part #3 in the jack detail)
- Install the two Carriage Bolts, (part #24) in the hole on the base frame to the rear of the front caster holes. One left, one right. Tighten in place by holding the head with locking pliers, and turning the nut with a wrench.

Step Five

- Balance Square Tube (part #20) on the jack, making sure the jack is inserted into the recess in the tube.
- Insert Side Frame I and II (parts 9 & 21) onto the Outside Tubes, with the hinge end toward the front of the cart. Rest the Side Frames on the Square Tube, and assemble with three bolts on each end, (part #5&8) washers and nuts. Fully tighten these nuts.

Step Six

- Lightly tighten the nuts on the bolts that are holding the Outer Tubes to the base. Test alignment of these parts by slowly pumping the jack, raising the upper section a few inches. If there is any binding, loosen a few nuts and adjust the upright tubes until the upper unit rises smoothly. Fully tighten all nuts.

Step Seven

- Remove the cart from the sawhorses.
- Mount the Panel Handler Frame (part #1) on the upper assembly, by placing it in the hinge assembly and inserting the bolts (part #4). Add washers and nuts, tightening the nuts, but not so much as to bind the frame.
- Adjust levelers (part #27) so that when the frame is locked in the horizontal position (lock #28) they support the weight of the frame, and no weight is on the lock.

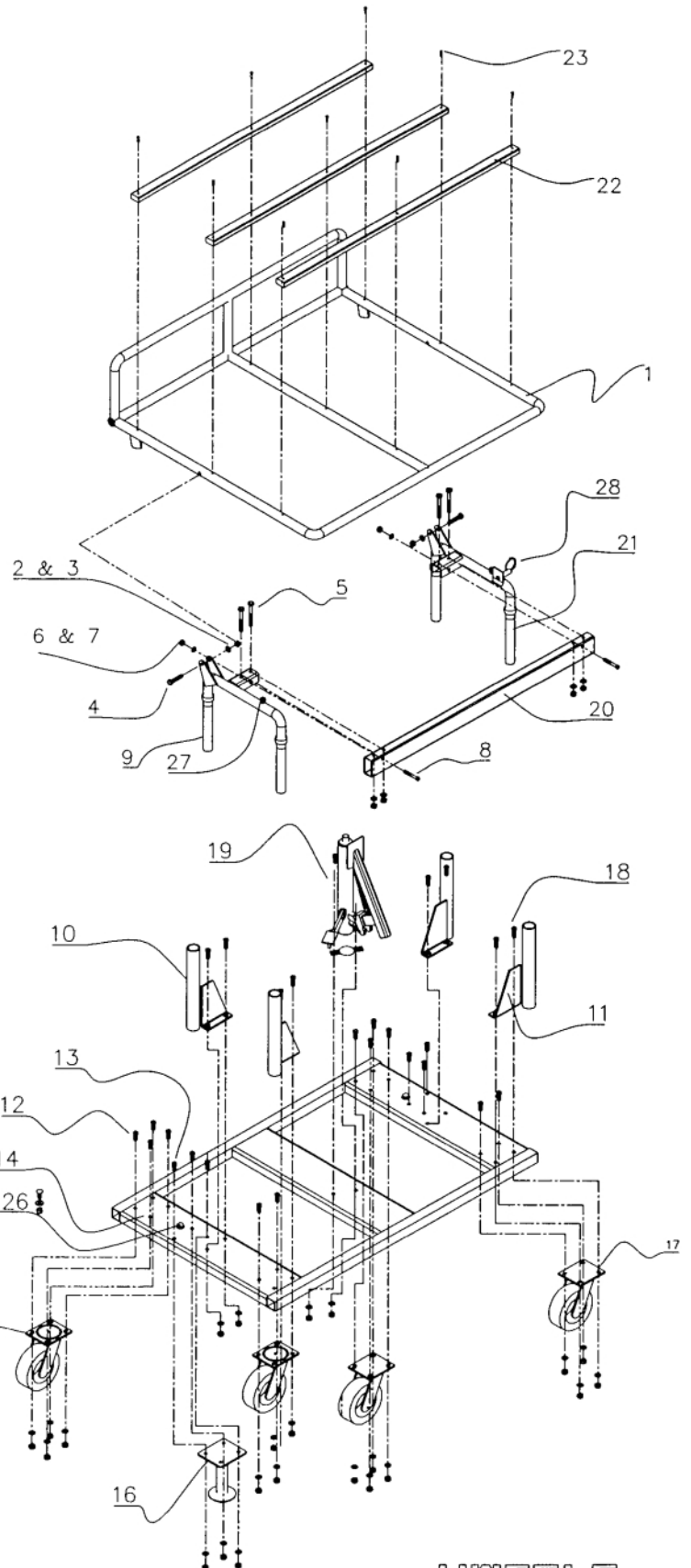
Use Tips:

- Never load more than ten 3/4" panels (or equivalent) on the cart at a time.
- When loading and unloading the cart, make sure the foot brake is set. A light kick with the toe releases brake.
- When sliding panels off of the cart in the horizontal position, make sure pull catch (part 28) is fully engaged.
- Keep wood frame waxed with a quality paste furniture wax, to keep the panels sliding smoothly.
- The Side Frame Tubes may occasionally need to be wiped clean and have more grease applied. Use any all-purpose grease and apply lightly.
- One quick press of the jack release petal will lower the panels approximately the same distance as one pump of the lift petal lifts it.

Häfele HPC Cart Instructions and Tips.

PANEL HANDLER ASSEMBLY INSTRUCTION

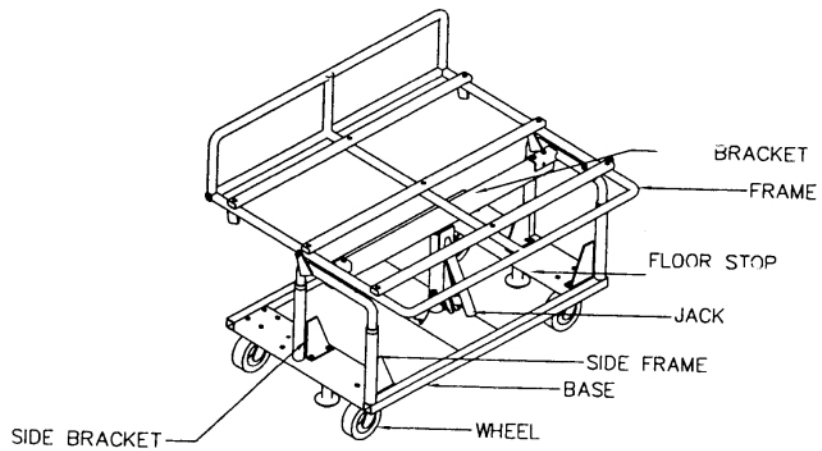
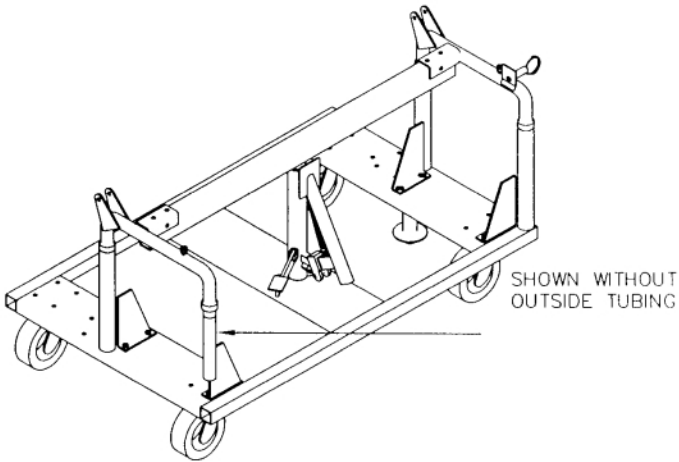
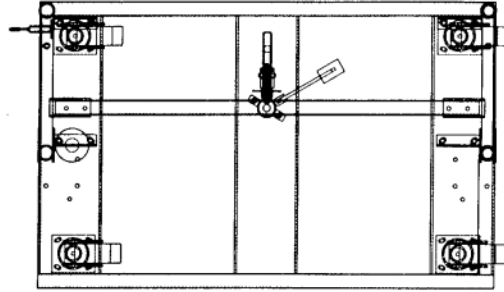
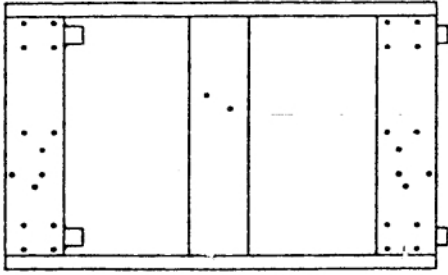
NO.	DESCRIPTION	ARTICLE NUMBER	SIZE	QTY.
1	PANEL HANDLER-FRAME	007.94.002.77		1PC.
2	NUT	007.94.003.77	M12	6PCS
3	PLATE WASHER	007.94.004.77	Ø12	6PCS
4	BOLT	007.94.005.77	M12X60	2PCS
5	BOLT	007.94.006.77	M12X95	4PCS
6	NUT	007.94.007.77	M10	32PCS
7	PLATE WASHER	007.94.008.77	Ø10	32PCS
8	BOLT	007.94.009.77	M10X65	2PCS
9	SIDE FRAME I	007.94.010.77		1PC
10	OUTSIDE TUBING I	007.94.011.77		2PCS
11	OUTSIDE TUBING II	007.94.012.77		2PCS
12	BOLT	007.94.013.77	M10X25	24PCS
13	BOLT	007.94.014.77	M10X25	2PCS
14	PANEL HANDLER-BASE	007.94.015.77		1PC
15	SWIVEL CASTER	661.26.302.77		2PCS
16	FOOT BRAKE SET	007.94.001.77		2PCS
17	FIXED CASTER	661.26.301.77		2PCS
18	BOLT	007.94.016.77	M10X30	4PCS
19	JACK (SEE BELLOW)	007.94.000.77		1PC
20	SQUARE TUBE	007.94.017.77		1PC
21	SIDE FRAME II	007.94.018.77		1PC
22	WOOD FRAME	007.94.019.77		3PCS
23	BOLT	007.94.020.77	M6X20	9PCS
24	CARRAGE BOLT			2PCS
25	WASHER			2PCS
26	NUT			2PCS
27	LEVELER			1PC
28	PULL/CATCH			1PC



BOX-JACK DETAILS

SOCKET HEAD
CAP SCREW
(OIL PLUG)

1	SPRING CLIP	2PCS
2	SMALL AXLE	1PC
3	SMALL FOOT BOARD	12 1PC



Installation Help Line:

1-800-423-3531

HÄFELE

Häfele America Co. • 3901 Cheyenne Drive • Archdale, NC 27263 • USA