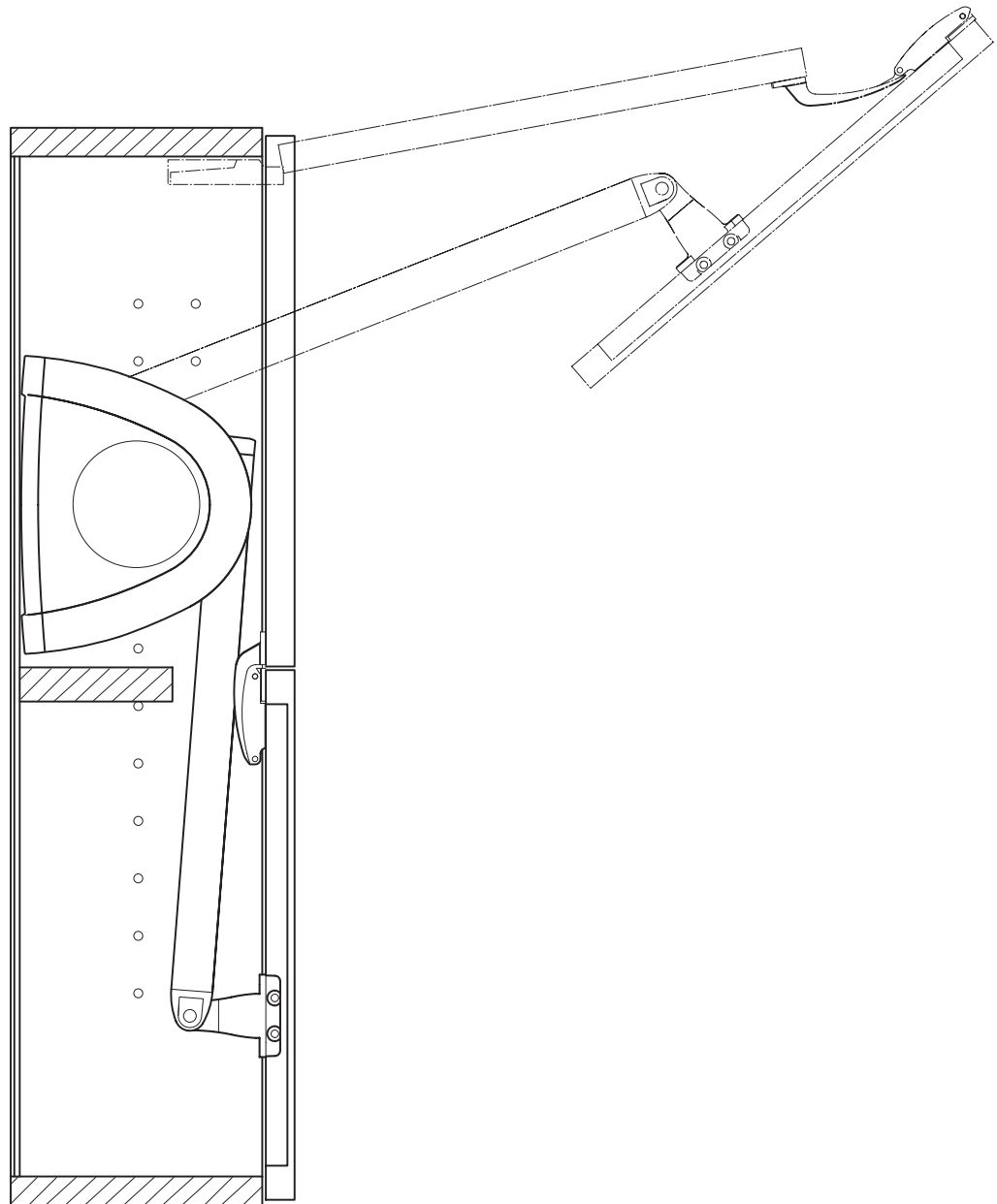


Lift-up Fittings – Senso



Foreword

By choosing the senso lift-up fitting, you have opted for a fitting solution that is technically very advanced and mechanically very efficient. Your senso is manufactured with extreme care and precision and goes through numerous quality and safety checks in order to ensure that it operates smoothly and safely.

1. IMPORTANT SAFETY NOTICE

The installation must be carried out in accordance with the assembly instructions; otherwise there is a risk of injury.

2. The present senso lift-up fitting is only suitable for the intended use as a folding lid support for living room, bath, kitchen and office furniture according to the weight printed on the fitting. Any use that falls outside this is regarded as not being an agreed use. The manufacturer is not responsible for any losses or damage resulting from other uses.
3. The observance of the operating instructions as prescribed by the manufacturer also form part of the agreed use.
4. Also take into account the general legal and miscellaneous regulations and legal provisions that are applicable – even those that apply in the operator’s country – as well as the applicable environmental protection regulations. The regulations of the trade associations or other supervisory authorities that are in force locally must always be observed.
5. The manufacturer cannot be held responsible for any losses or damage resulting from unauthorised modifications to the senso.

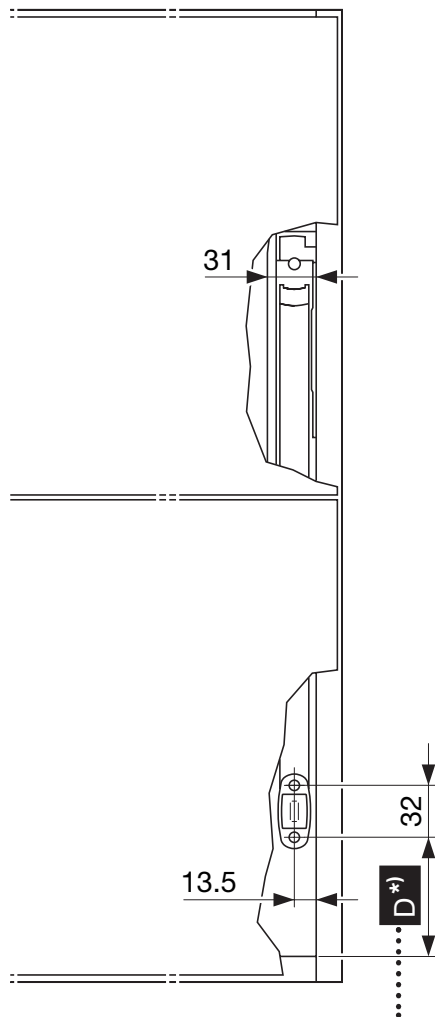
IMPORTANT SAFETY NOTICE

The metal frame and the used gas suspension resp. damping elements of the fixture must not be opened under any circumstances, as the internal components are under a lot of tension and there is a risk of injury.

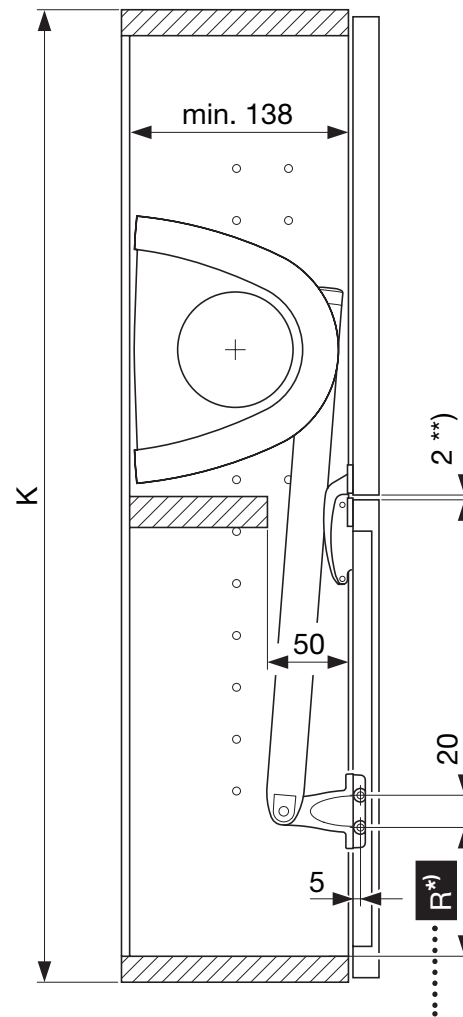
Provided the above guidelines are adhered to, you will enjoy many years of satisfaction from your senso lift-up fitting. For any further questions please do not hesitate to contact us.

1

Overview on construction sizes Cabinet height 520 mm - 800 mm



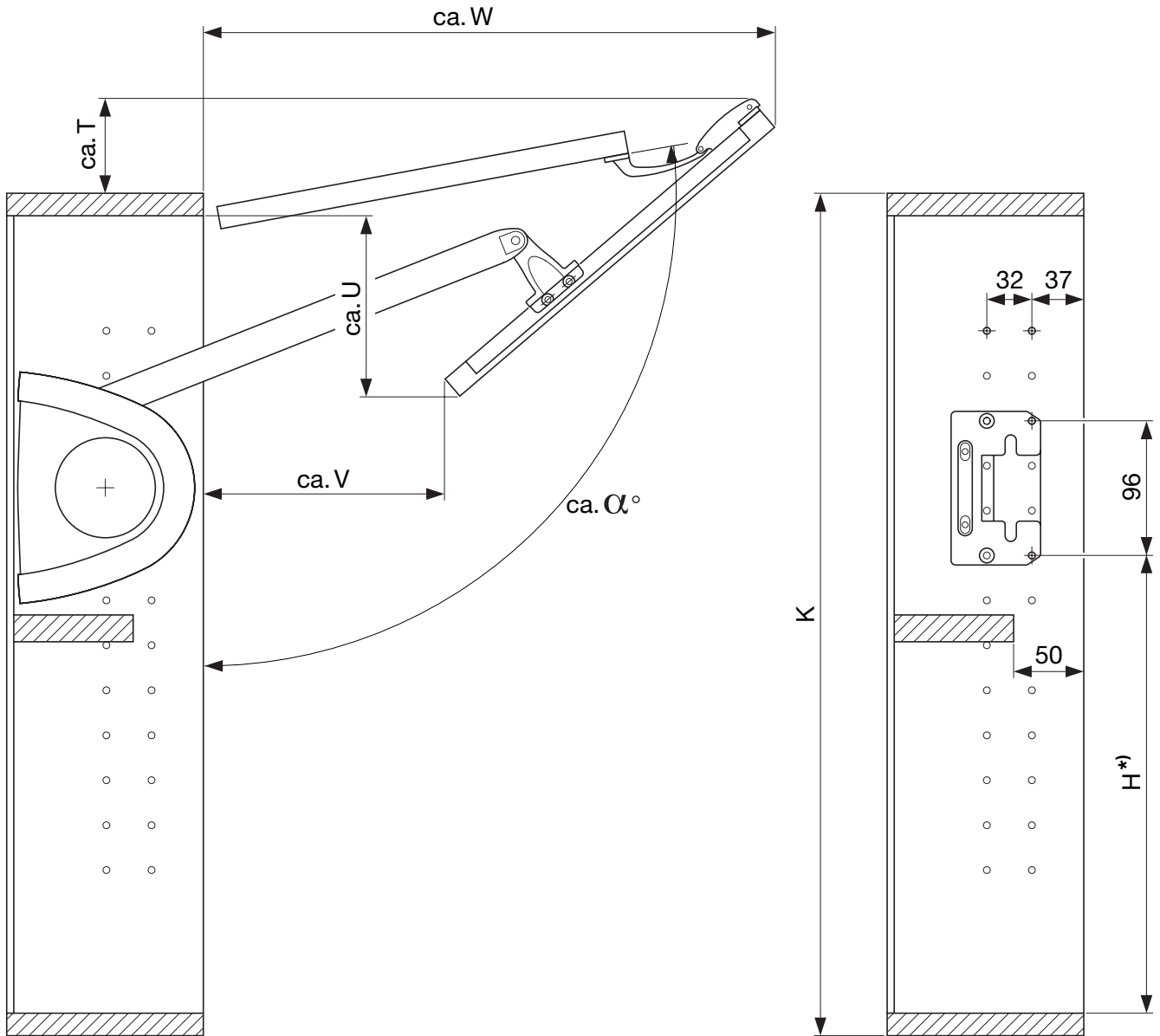
Design for particle board and MDF board.



Design for aluminum frame profile.

***) =** Fitting and fixing brackets can be positioned upwards/downwards but in same mm steps. Width depending on K (Please check!).

****)** = in case of adjustable central hinge joints 2-4 mm



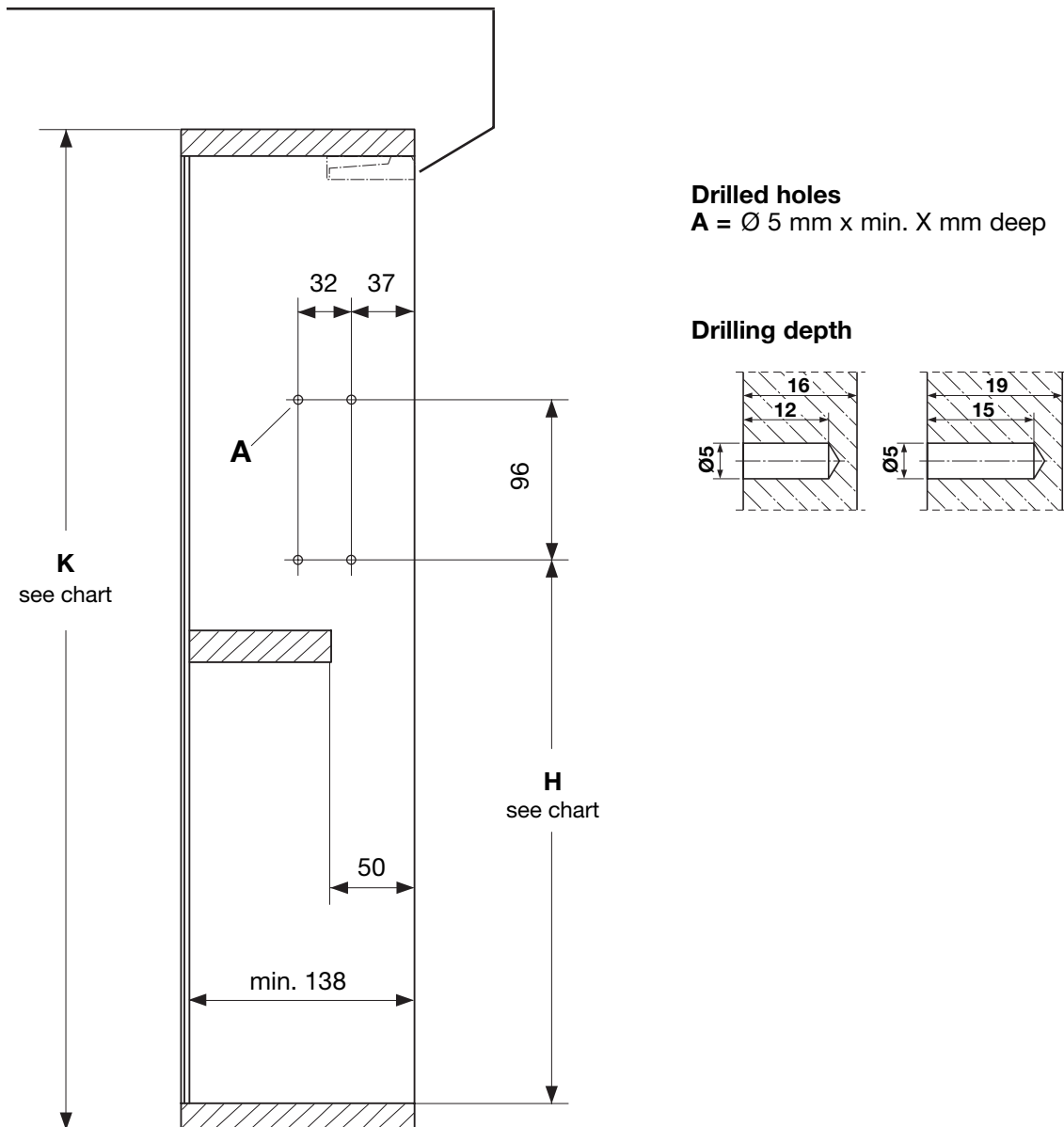
Cabinet Height [mm]	α [°]	[mm]							
		D	H	K	R	T	U	V	W
520 *)	100°	36	250	520	42	50	120	165	370
550	105°	57.5	290	550	63.5	70	115	170	380
600	100°	73.5	326	600	79.5	70	130	170	405
650	110°	67.5	340	650	73.5	150	170	260	375
720	105°	75.5	378	720	81.5	125	160	225	455
800	100°	71.5	392	800	77.5	95	215	240	500

*) = Special size

2**Drill holes for the senso frame according to the drilling diagram.**

View of right inner side. (left side symmetrical)

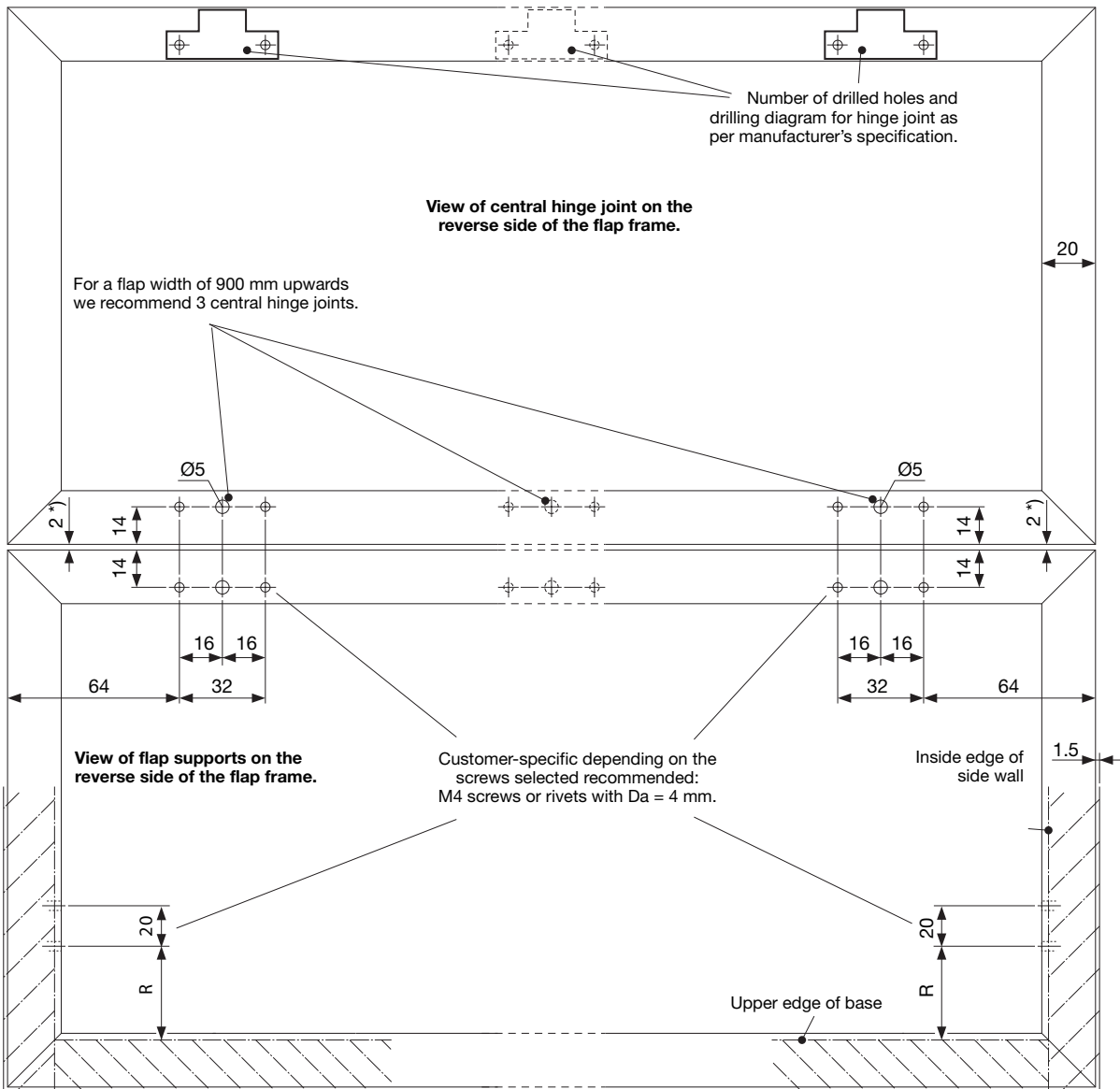
(Hinge with a minimum opening angle of 110° in accordance with the manufacturer's specifications)



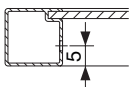
3

Drill holes for the cabinet flap which comes in 2 parts according to the drilling diagram.

Suitable for 20 mm aluminum frame profile.

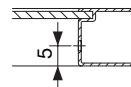


*) = in case of adjustable central hinge joints 2-4 mm



Advice:

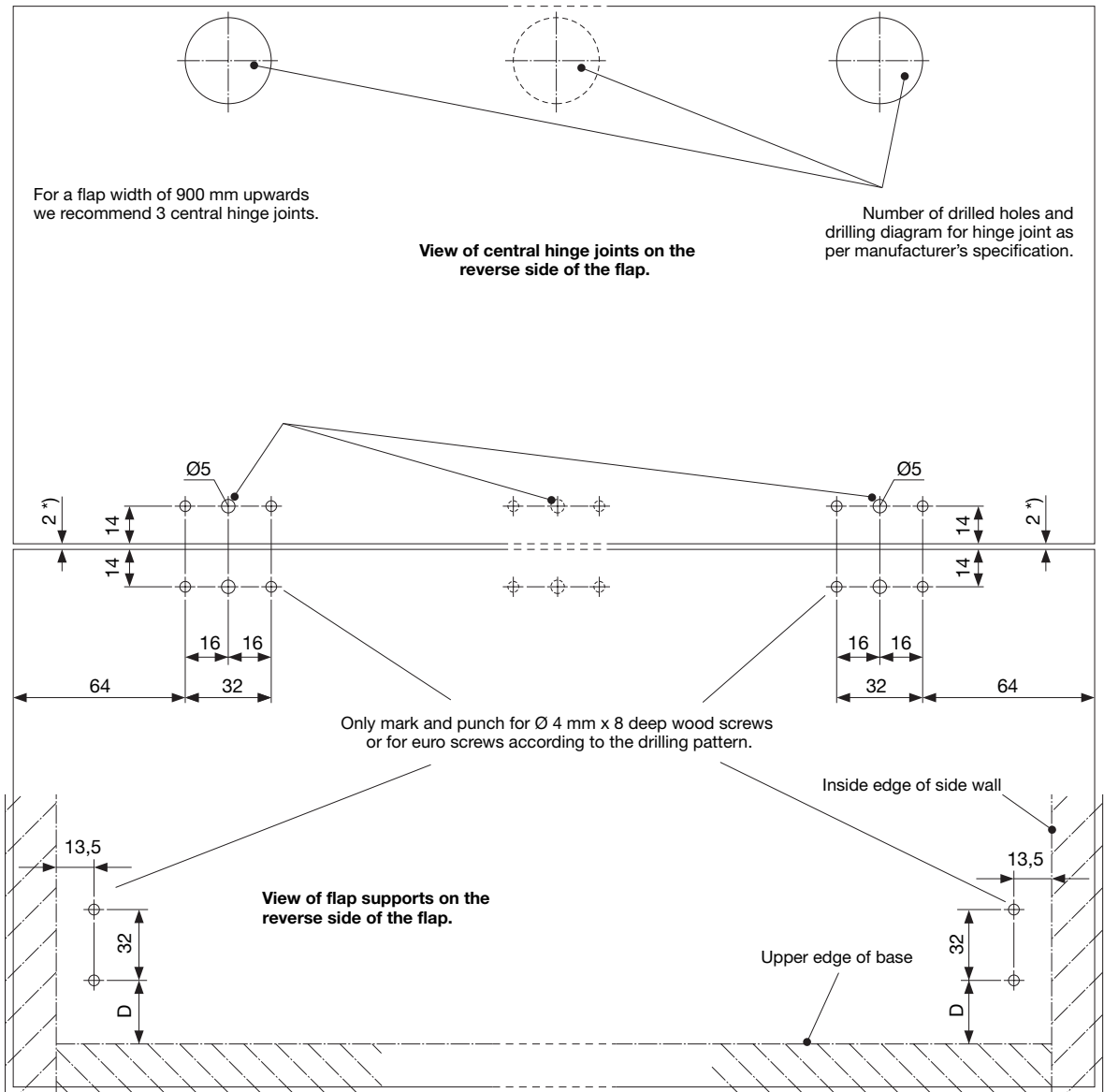
Drill holes in the flap frame. Dimensions from the upper edge of the base or the inside edge of the side wall.



4

Drill holes for the cabinet flap which comes in 2 parts according to the drilling diagram.

Design for particle board and MDF board.

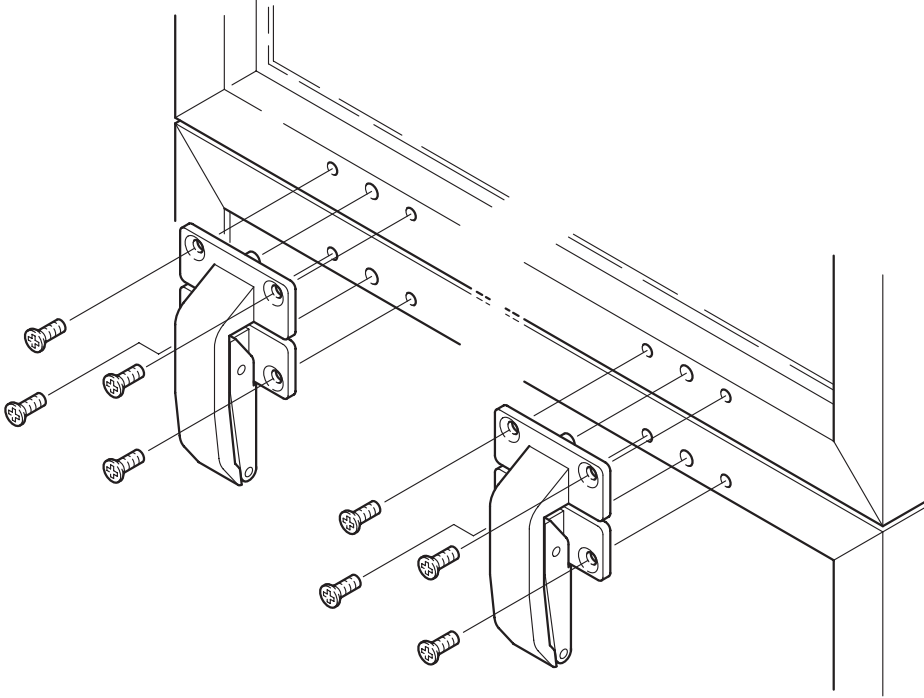


*) = in case of adjustable central hinge joints 2-4 mm

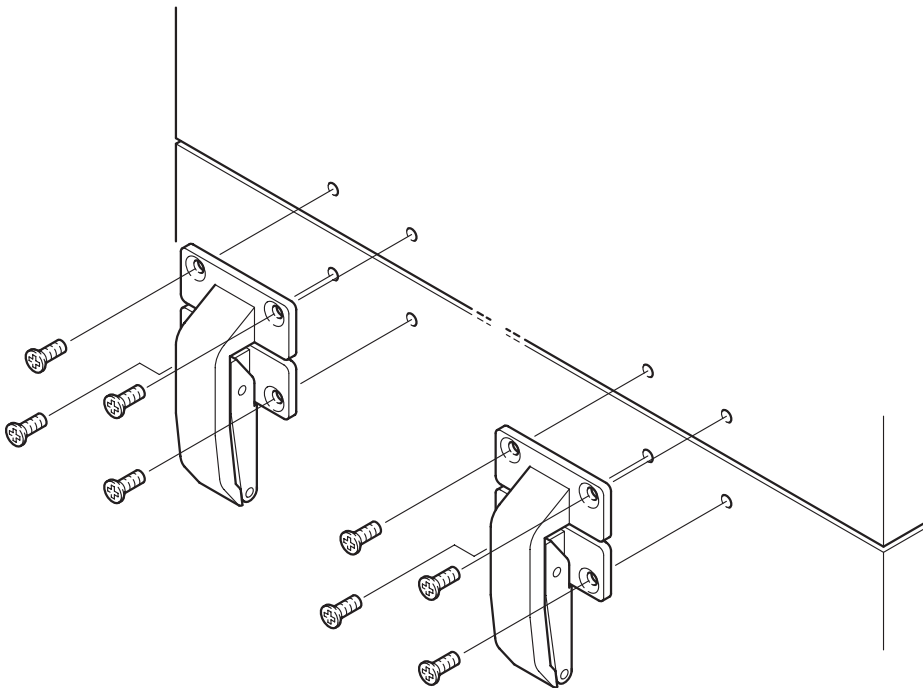
5

Screw the central hinge joints onto the cabinet flap which comes in 2 parts.

Design for aluminum frame profile.



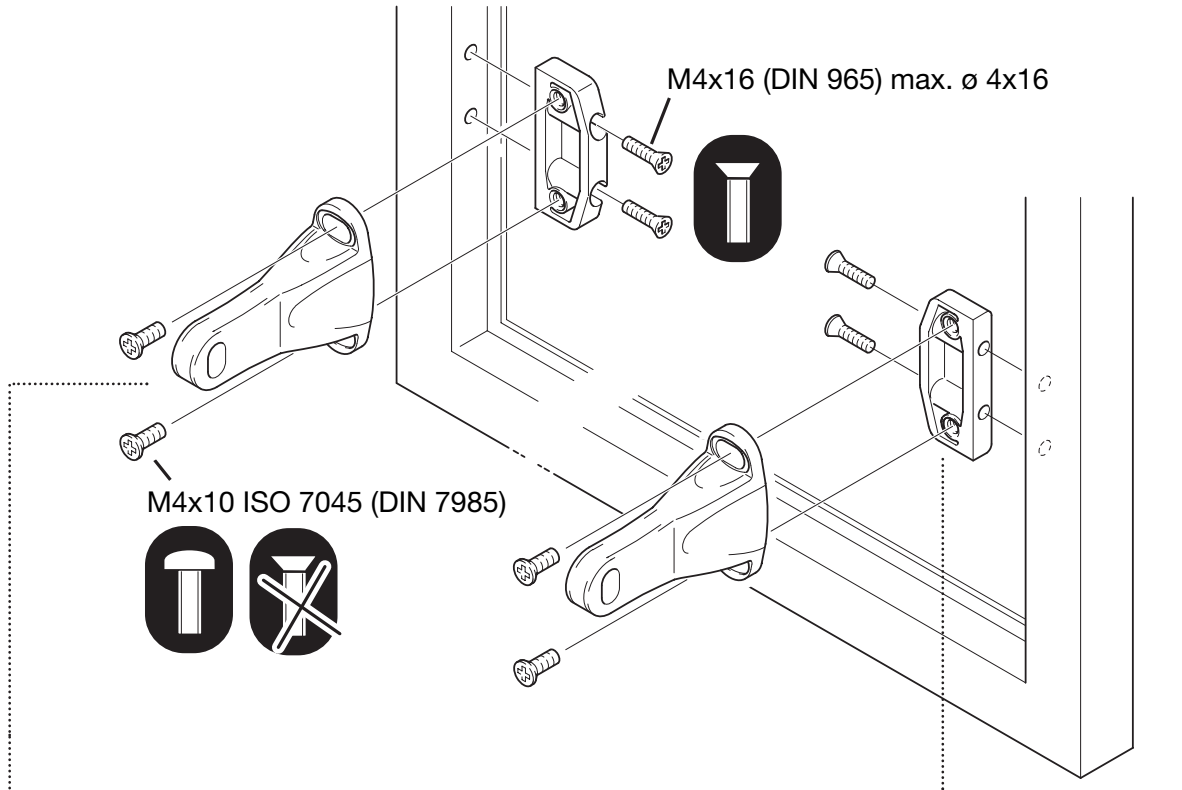
Design for particle board and MDF board.



6

Screw flap supports onto bottom part of cabinet flap.

Design for aluminum frame profile.



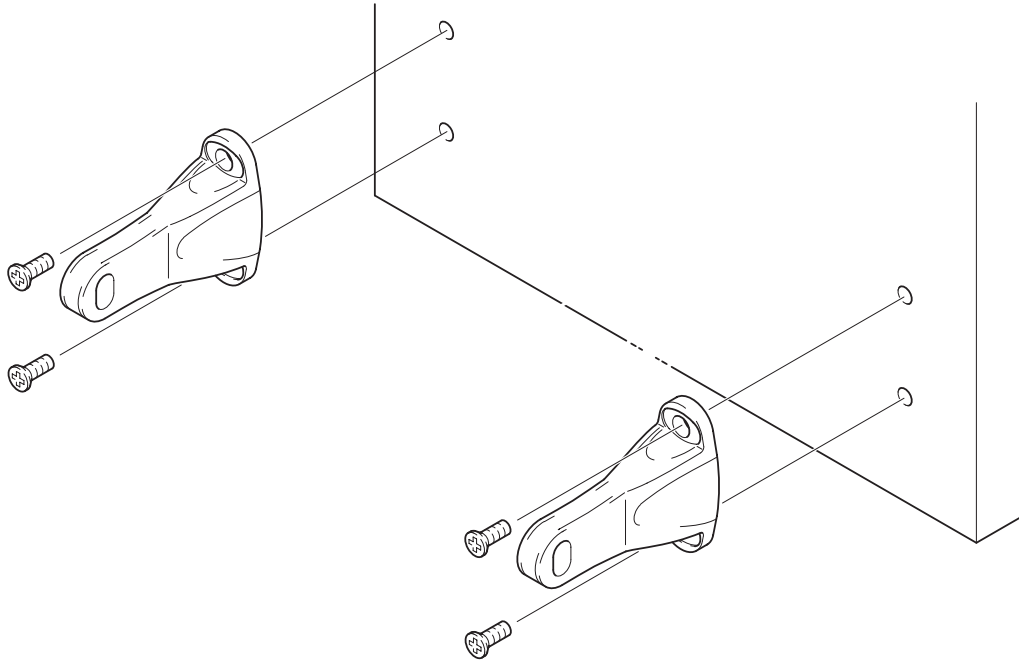
Flap support with long-hole for 20 mm Aluminum frame profile
 (included in SET, needs to be stated on order, otherwise
 "Standard" is being delivered. The matching adapter to be ordered
 separately)

Adapter for 20 mm aluminum frame profile
 (Not included in SET, to be ordered separately)



(Fixing screws are **not** included in the SET, please order **separately**)

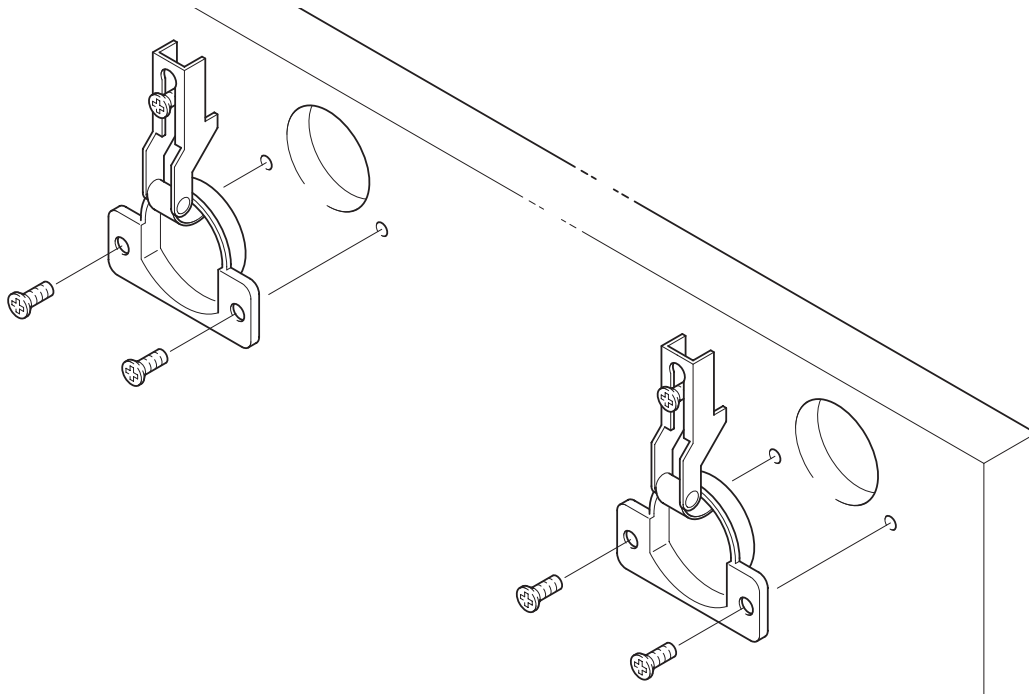
Design for particle board and MDF board.



Flap support for wood-, particle board and MDF board or wide frames as of 40 mm.
(included in SET, please state on order)

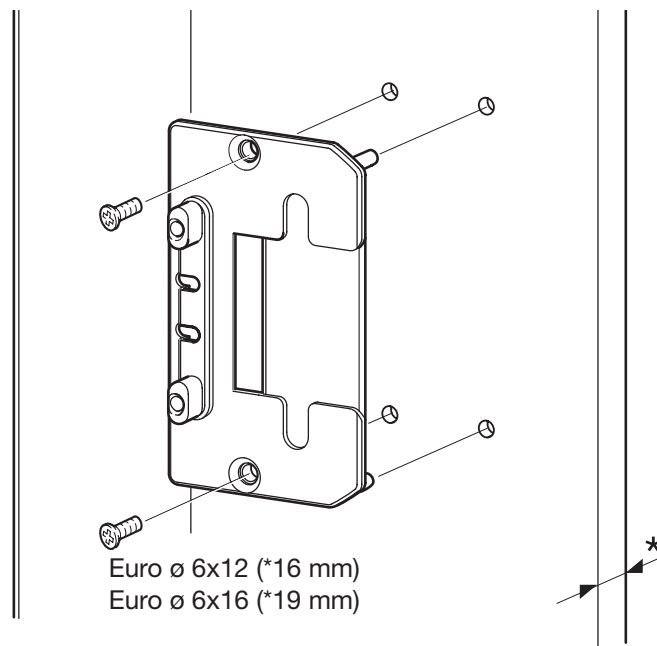
7

Pre-mount hinge joints on the top of cabinet flap according to the manufacturer's specifications.



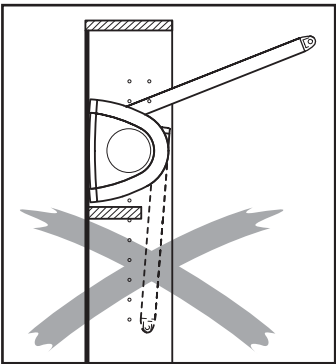
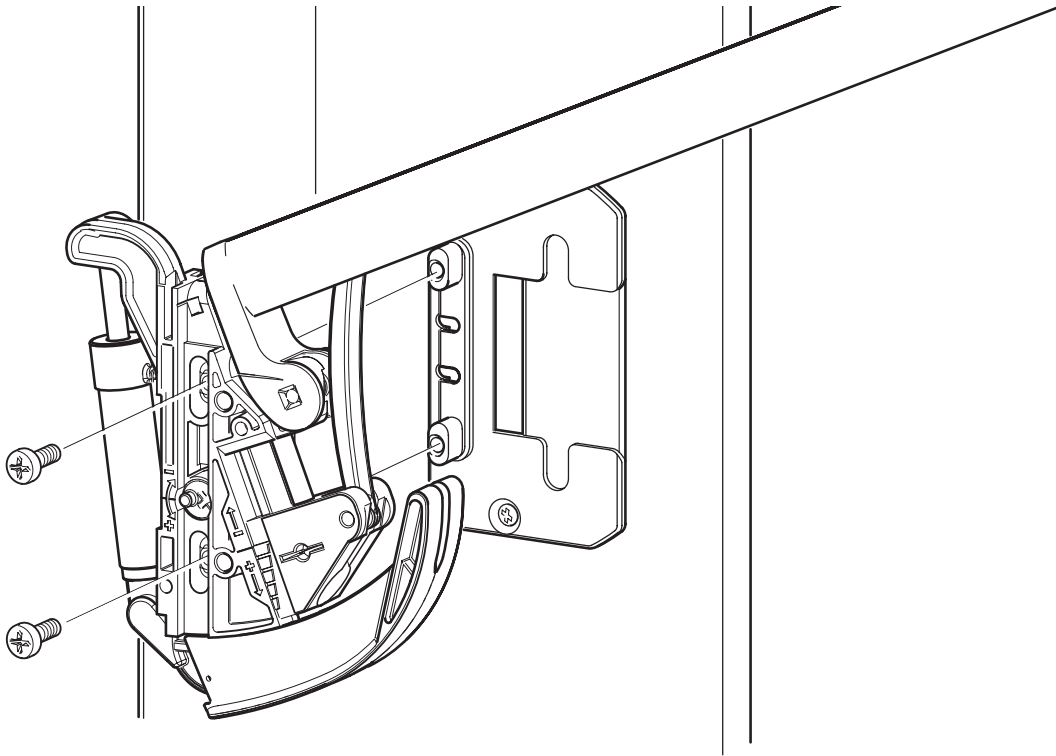
8

Screw on the right and left base fixing plate.



Screw on senso-fitting.

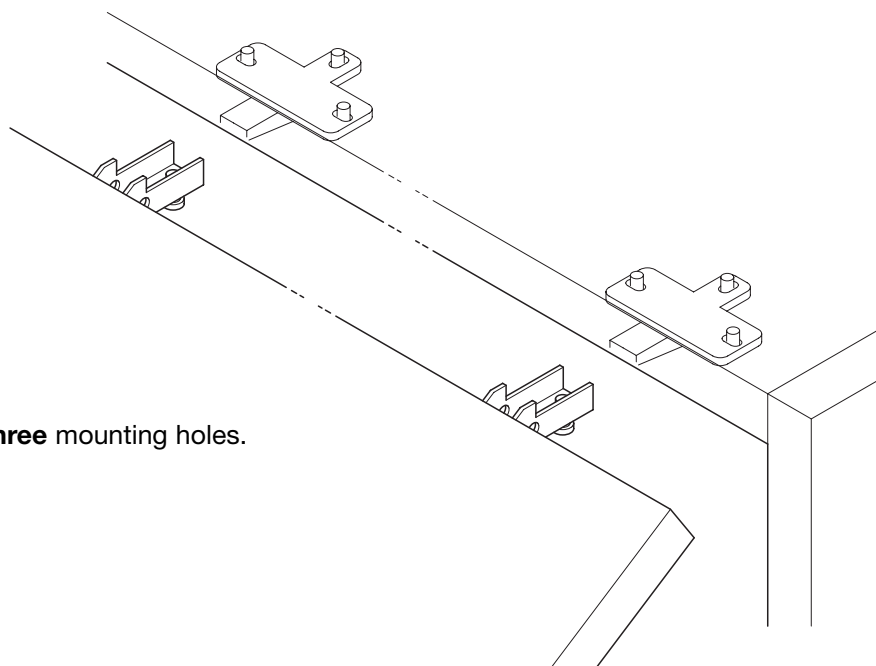
The fitting can be used for both sides (right and left)!

**Please Note**

The lifting arm of the senso frame must be in the open position (supply condition), otherwise there is a risk of injury. Fitting is under spring tension.

10

Insert the cabinet flap into the hinge joints and fix securely.

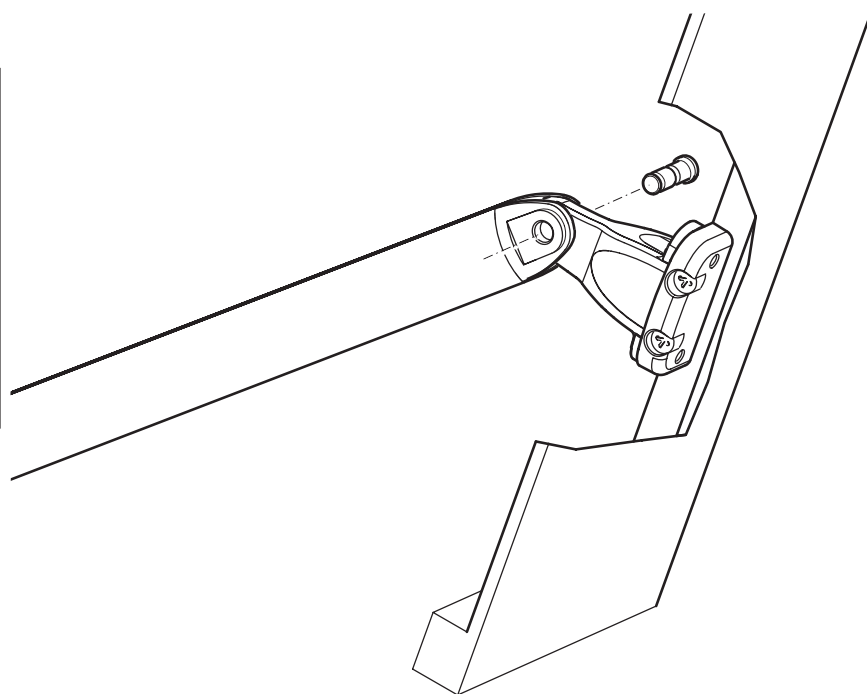
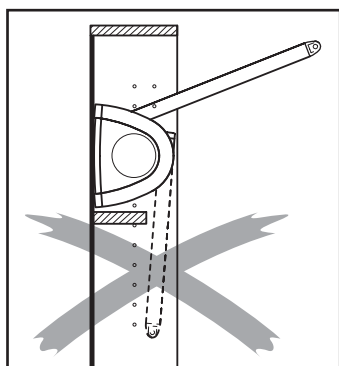


We recommend

Cross-mounting plates with **three** mounting holes.

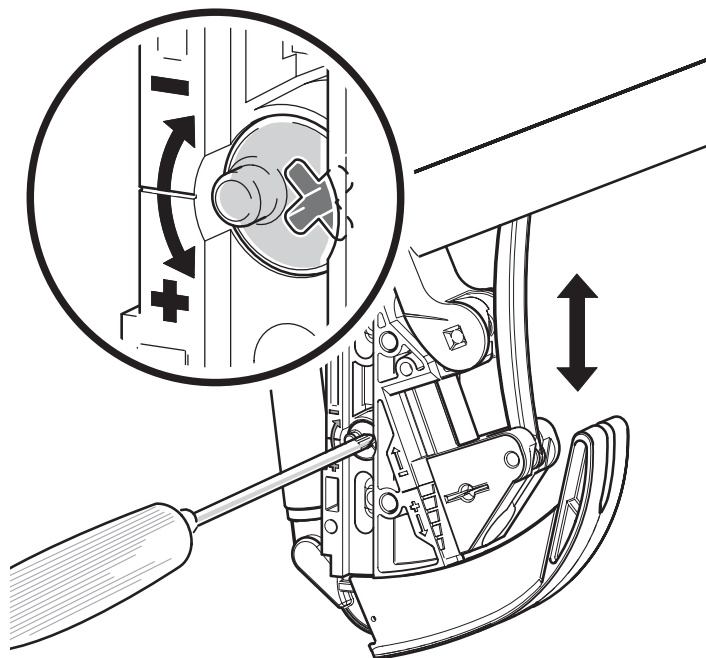
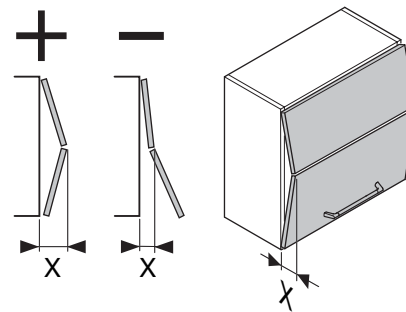
11

Insert lifting arms (open position) into flap supports and secure with bolt.

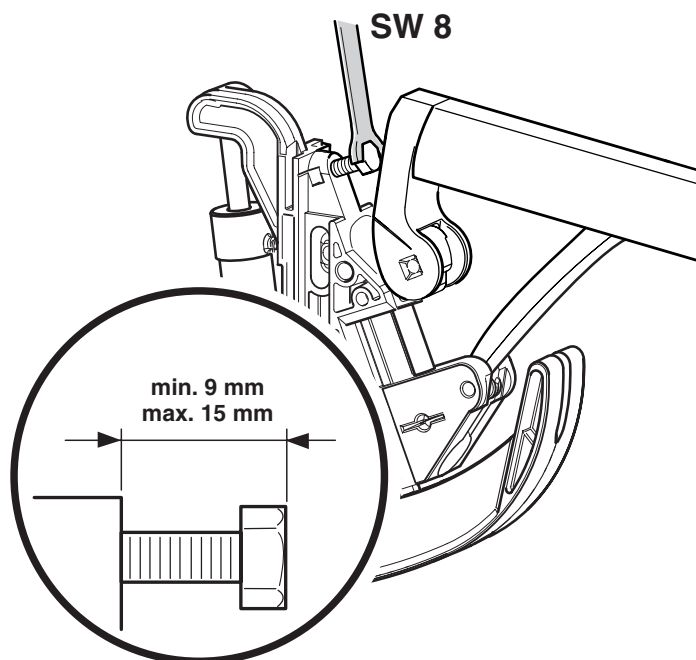
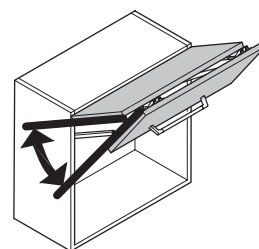


12

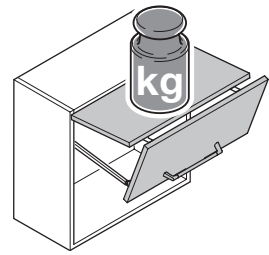
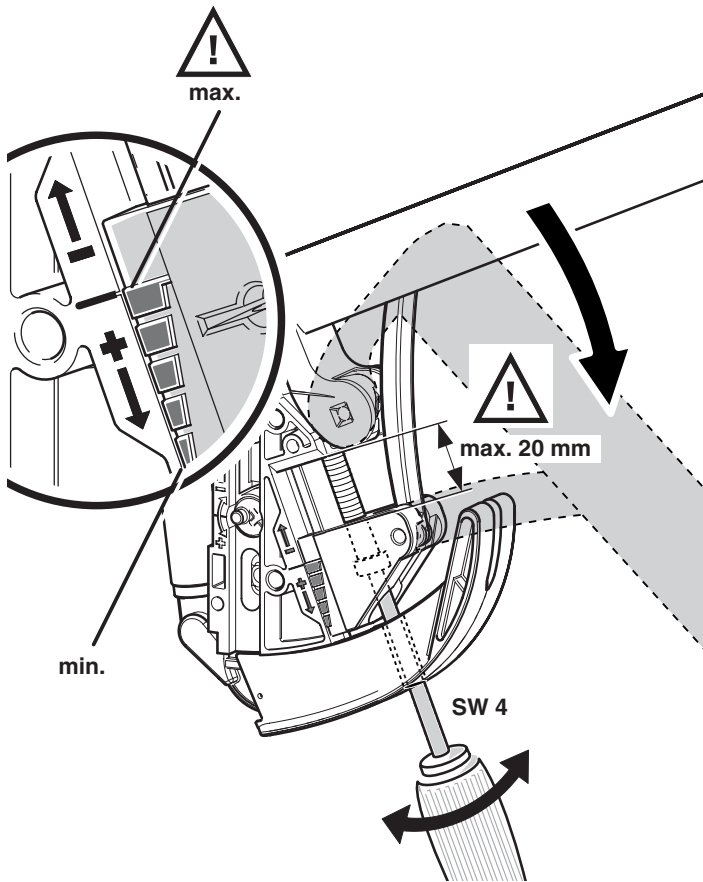
Adjust flap, if necessary.
(Fitting is pre-set by factory)



The adjustment of the center pulling-in of the flaps is done through the Exenter-screw (see scale).

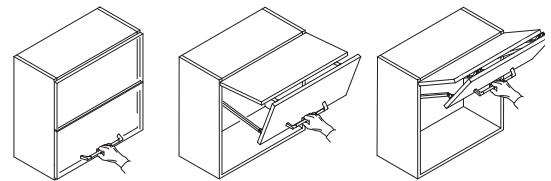


The adjustment of the **final stop (abt. 12 mm)** pre-set by the factory, is done through the stop-screw. To do this pull the lifting-arm / flap slightly downwards.

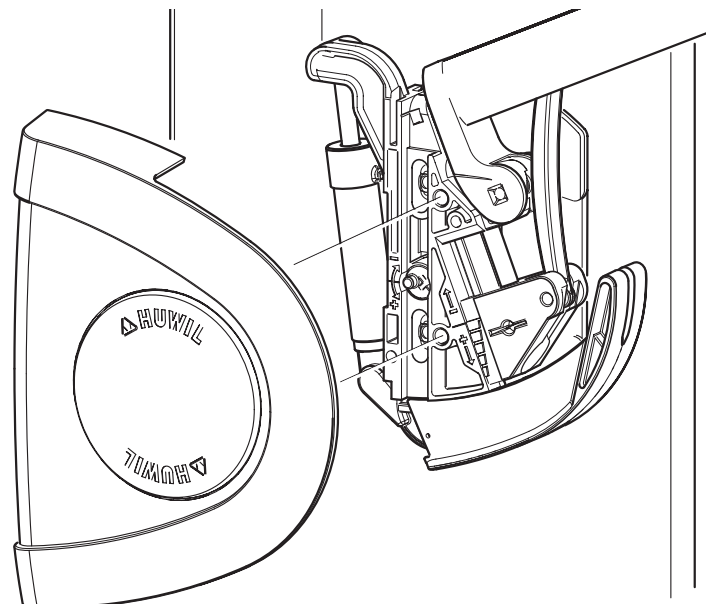


The **power-adjustment** for the flapweight is done through the hexagonal screwnut. (See scale) To do this pull lifting arm / flap downwards and adjust as shown.

If everything has been adjusted correctly the flap will stop in any position from abt. 20 cm opening on.



13 Install the housing-cover.



The correct model of the senso results from the height and weight of the flaps. See chart.

Cabinet Height [mm]	Door weight / Part-No. [kg]			
520 (500 – 540)				
550 (540 – 580)	3.0 – 6.5 03.3674.003.001	6.0 – 12.0 03.3674.003.002	9.0 – 18.0 03.3674.003.003	12.0 – 24.5 03.3674.003.004
600 (580 – 640)	3.0 – 6.0 03.3674.001.001	6.0 – 11.0 03.3674.001.002	9.0 – 17.0 03.3674.001.003	12.0 – 23.0 03.3674.001.004
650 (640 – 700)	3.0 – 5.5 03.3674.005.001	5.5 – 10.0 03.3674.005.002	8.0 – 16.0 03.3674.005.003	10.5 – 21.5 03.3674.005.004
720 (700 – 780)	3.5 – 5.5 03.3674.002.001	5.0 – 9.0 03.3674.002.002	7.0 – 15.0 03.3674.002.003	9.0 – 20.0 03.3674.002.004
800 (780 – 840)	—	5.0 – 9.0 03.3674.004.002	7.0 – 13.0 03.3674.004.003	9.0 – 17.0 03.3674.004.004
865 (840 – 900)	—	—	5.0 – 12.0 03.3674.006.003	7.5 – 16.0 03.3674.006.004

Up to a cabinet width of 600 mm and a door weight of up to 5 kg, one-sided applications are possible. The capacity information given above for the different models has to be reduced by 50%. The possible flap weights of the chart can be increased by 50% when using a third fitting at the middle wall of the cabinet.

Details of other models are available on request. Dimensions are not binding – we reserve the right for technical modifications.

HÄFELE

3901 Cheyenne Drive

P.O. Box 4000

Archdale, NC 27263

1-800-423-3531

www.hafele.com