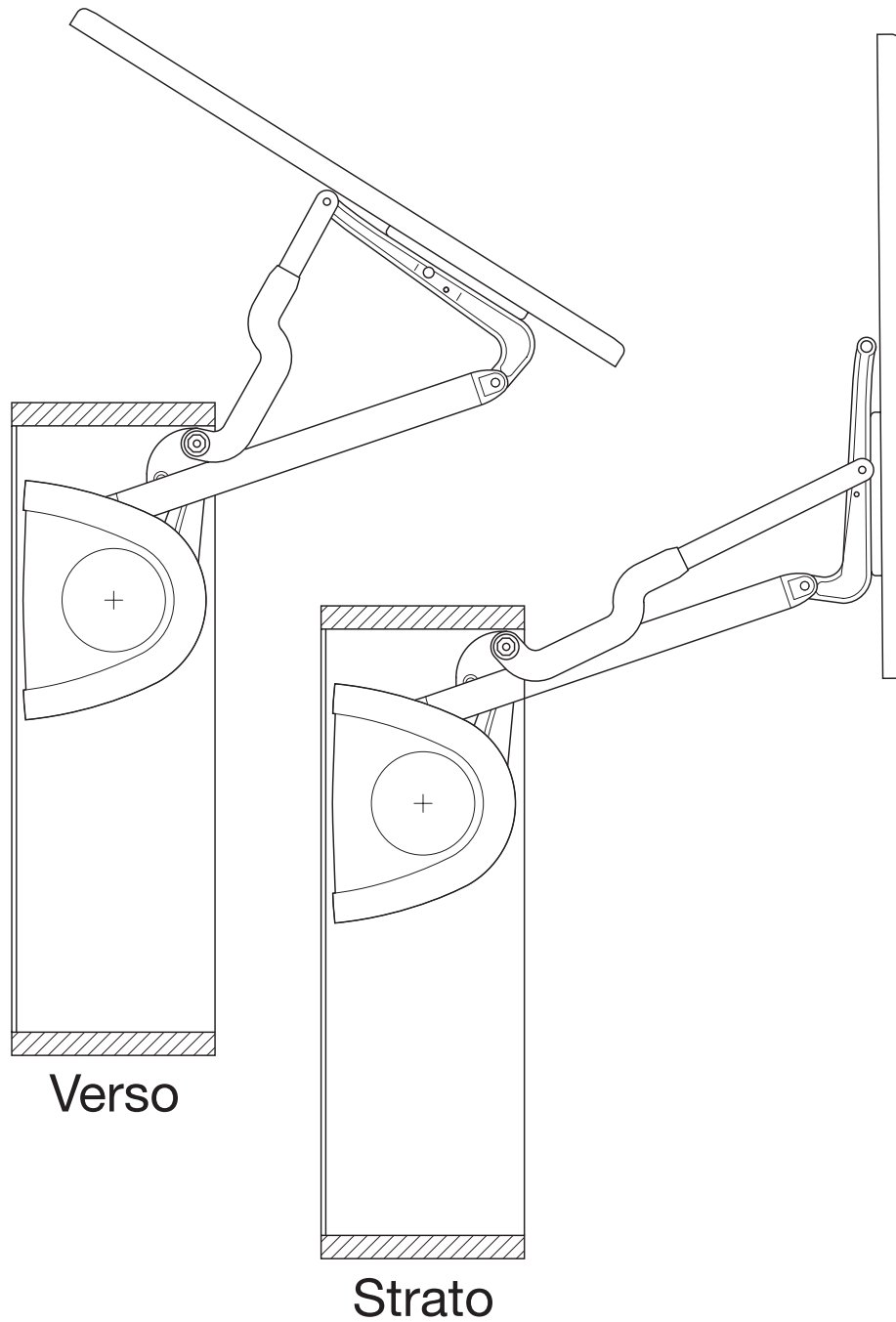


Lift-up Fittings – Verso and Strato



Foreword

By choosing the verso/strato lift-up fitting, you have opted for a fitting solution that is technically very advanced and mechanically very efficient. Your verso/strato lift-up fitting is manufactured with extreme care and precision and goes through numerous quality and safety checks in order to ensure that it operates smoothly and safely.

1. IMPORTANT SAFETY NOTICE

Installation must be carried out in accordance with the assembly instructions; otherwise there is a risk of injury.

2. The present verso/strato lift-up fitting is only suitable for the intended use as a lid support for living room, bath, kitchen and office furniture according to the weight printed on the fitting. The manufacturer is not responsible for any losses or damage resulting from other uses.
3. The observance of the assembly instructions as prescribed by the manufacturer also form part of the agreed use.
4. Also take into account the general legal and miscellaneous regulations and legal provisions that are applicable – even those that apply in the operator's country – as well as the applicable environmental protection regulations. The regulations of the trade associations or other supervisory authorities that are in force locally must always be observed.
5. The manufacturer cannot be held responsible for any losses or damage resulting from unauthorised modifications to the verso/strato lift-up fitting.

IMPORTANT SAFETY NOTICE

The metal frame and the used gas suspension resp. damping elements of the fixture must not be opened under any circumstances, as the internal components are under a lot of tension and there is a risk of injury.

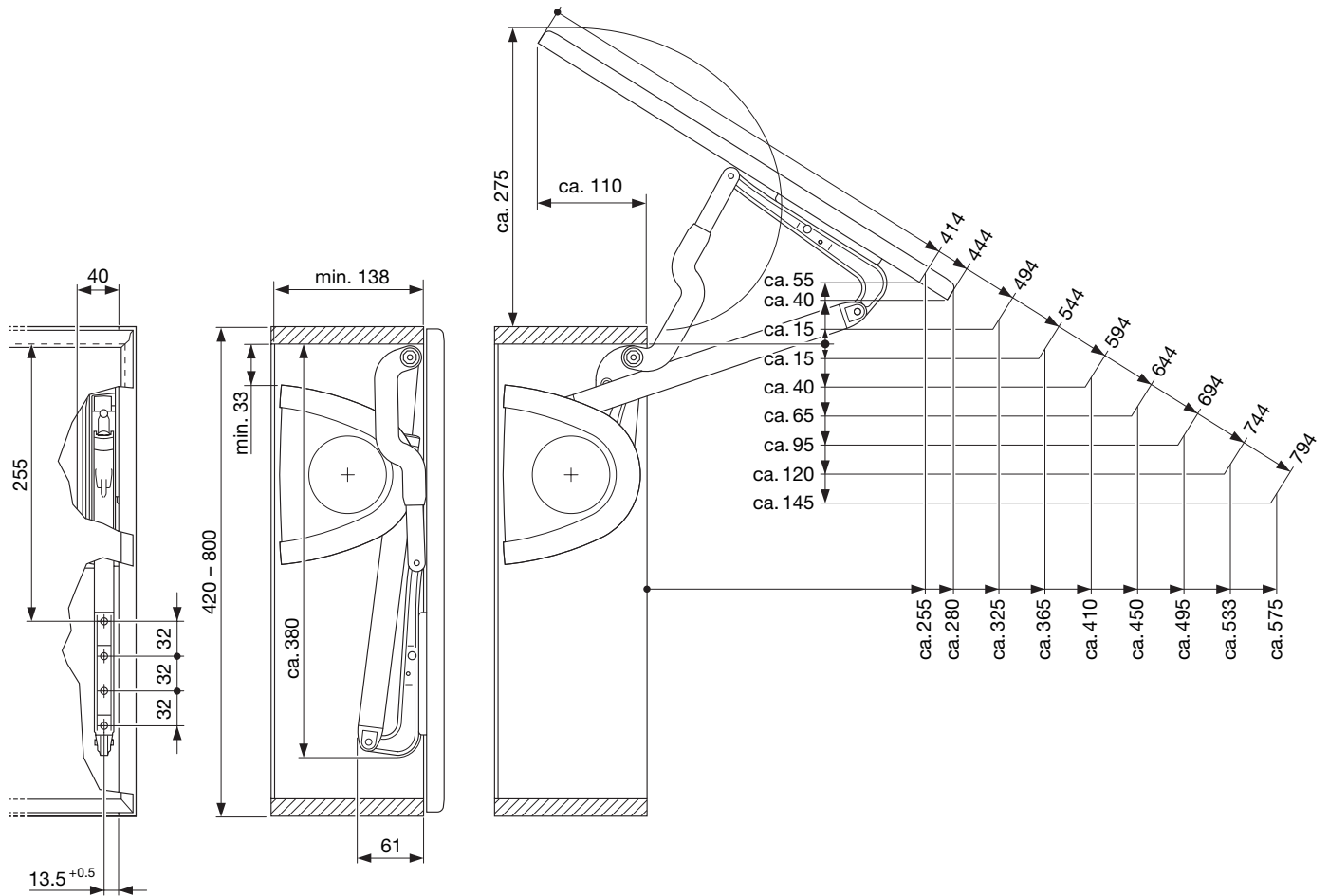
Provided the above guidelines are adhered to, you will enjoy many years of satisfaction from your verso/strato lift-up fitting. For any further questions please do not hesitate to contact us.

1

Overview on construction sizes for lift-up fitting – verso Cabinet height 420 - 800 mm

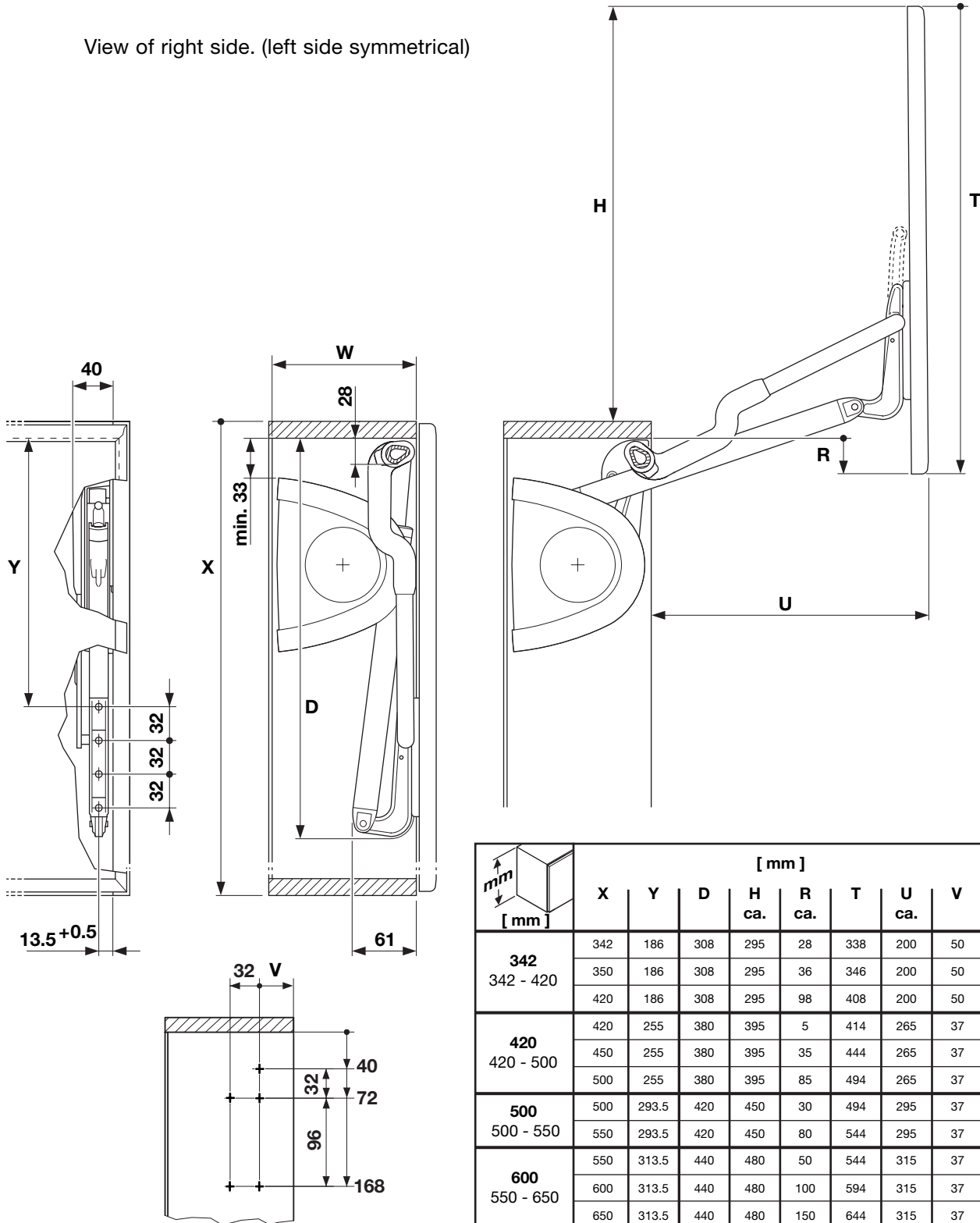


View of right side. (left side symmetrical)





View of right side. (left side symmetrical)



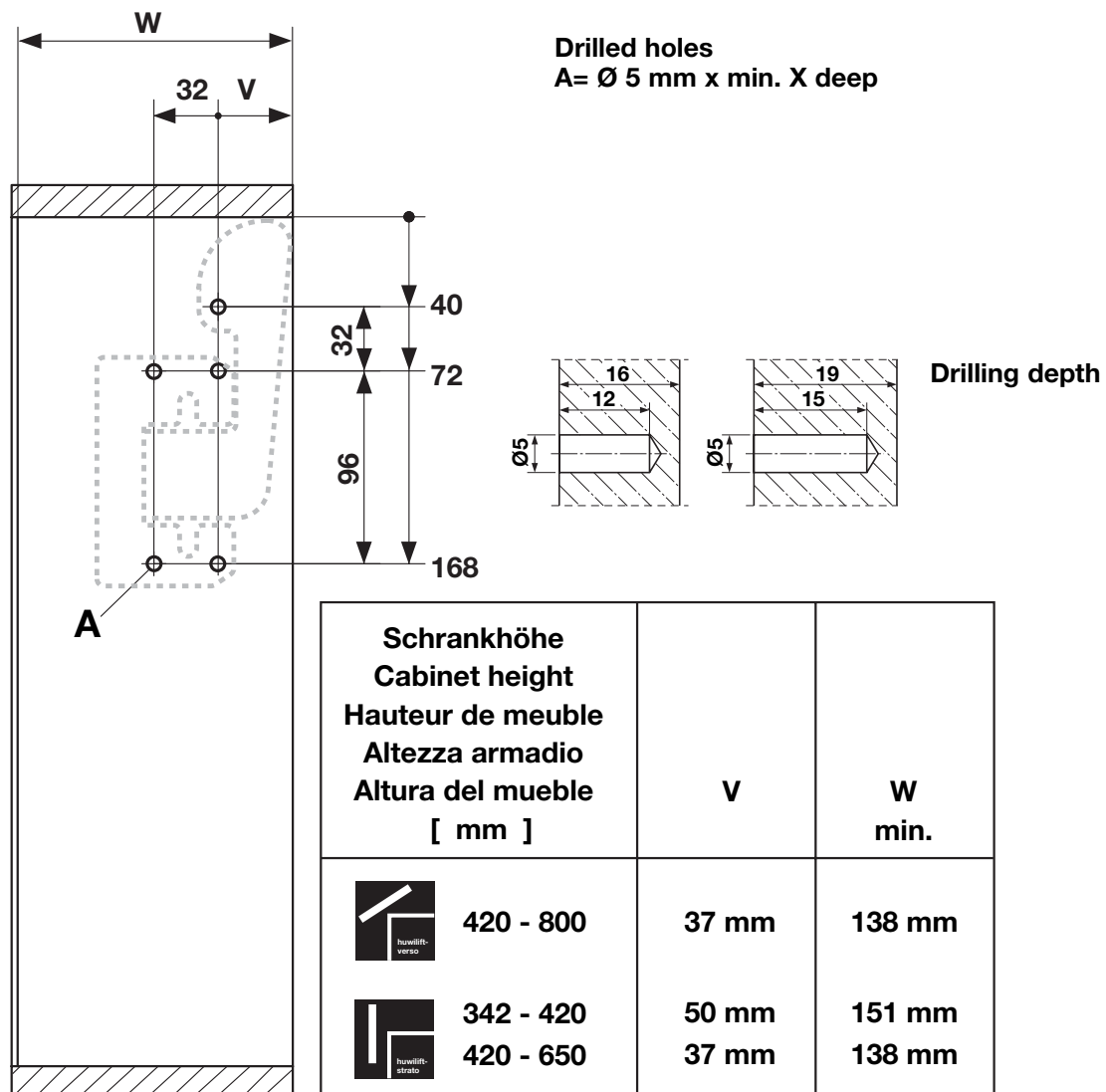
3

Drill holes for fitting in accordance with the drilling diagram. Lift-up fitting verso/strato



View of right inner side. (left side symmetrical)

Design for all cabinet heights



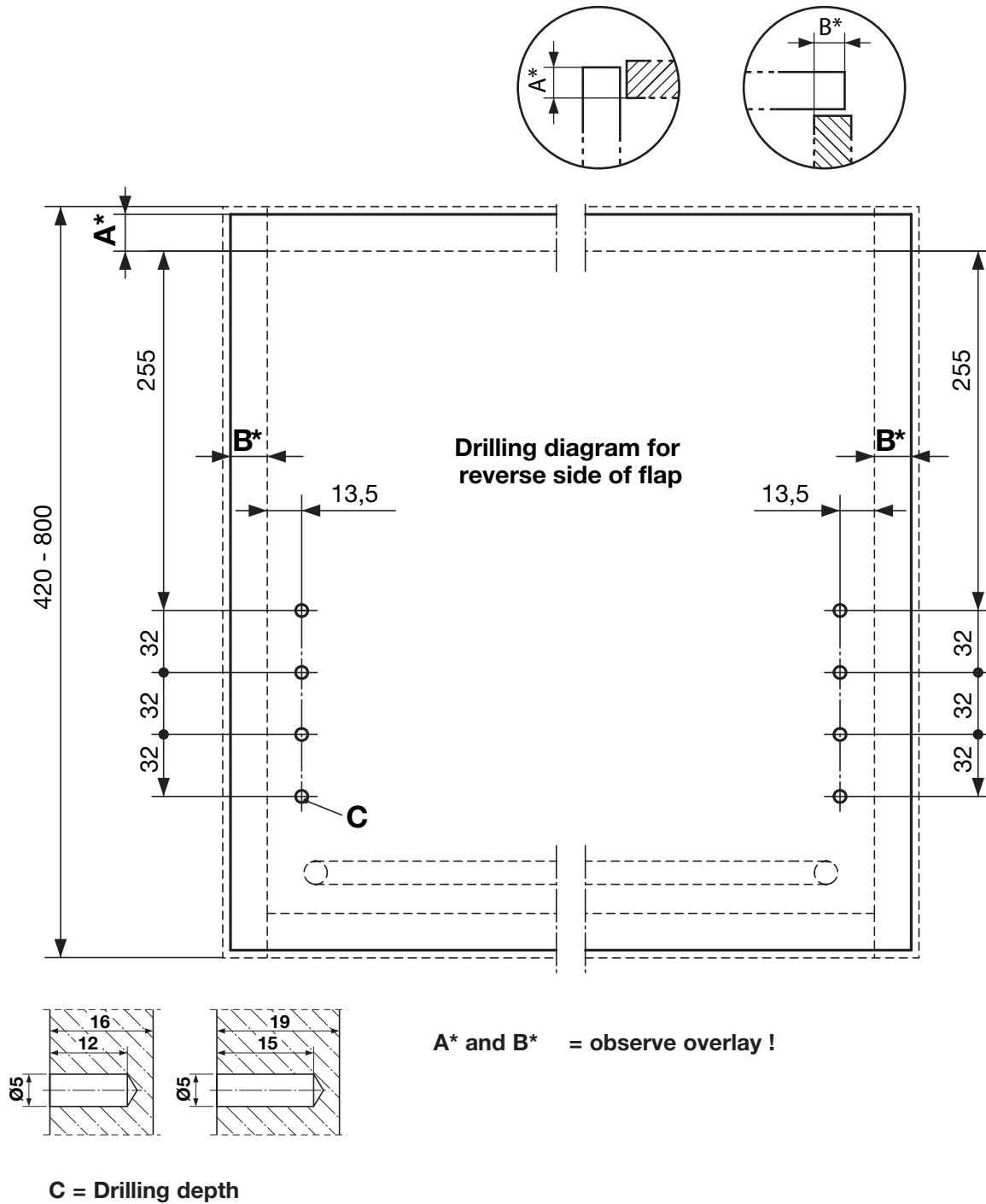
4

Drill holes for flap according to the drilling diagram.



Design for particle board and MDF board.

Cabinet height 420-800 mm

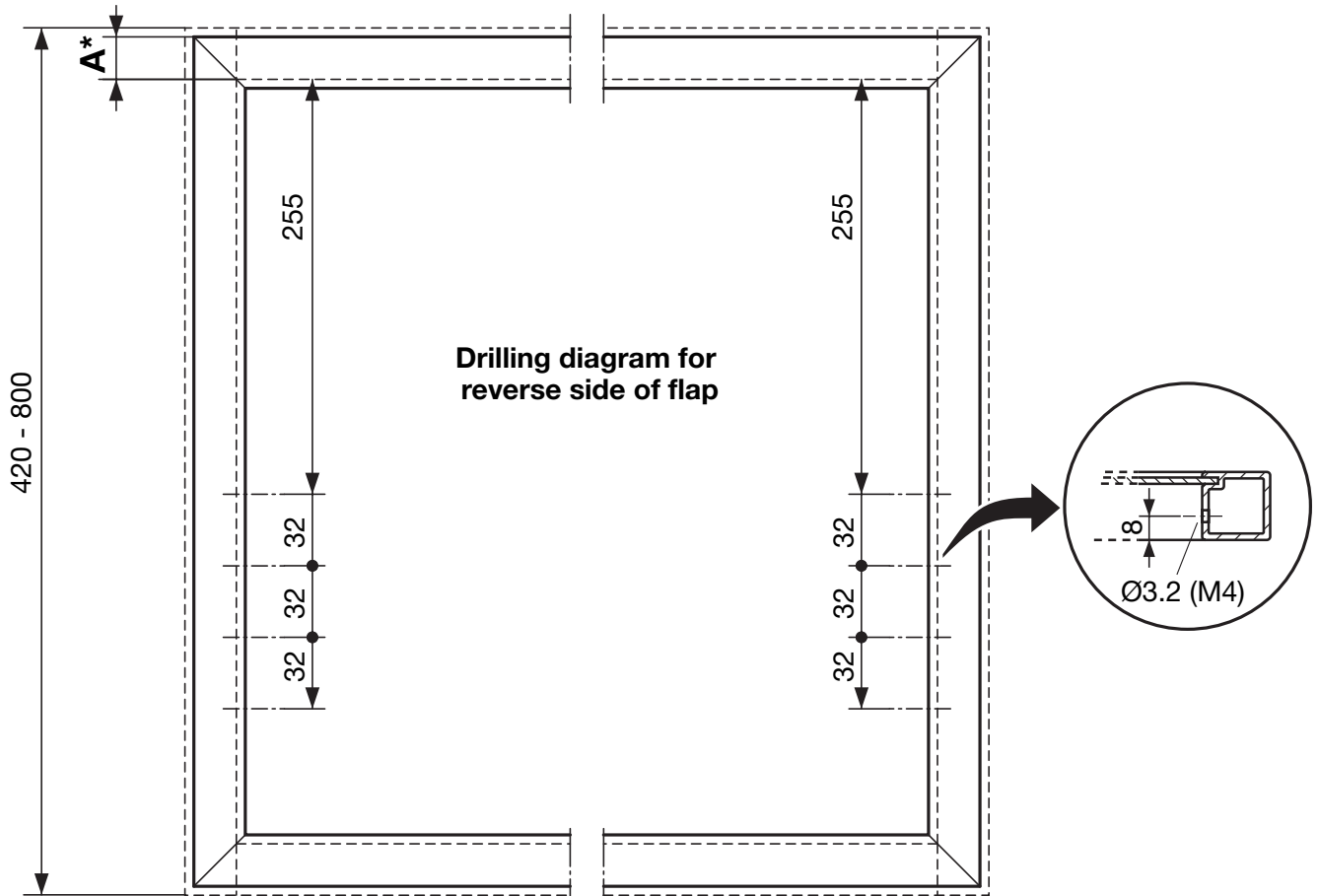


5

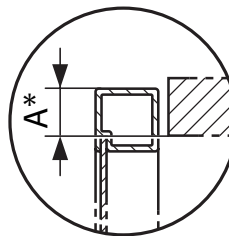
Drill holes for flap according to the drilling diagram.



Design for 20 mm aluminum profile.



A* = observe overlay!

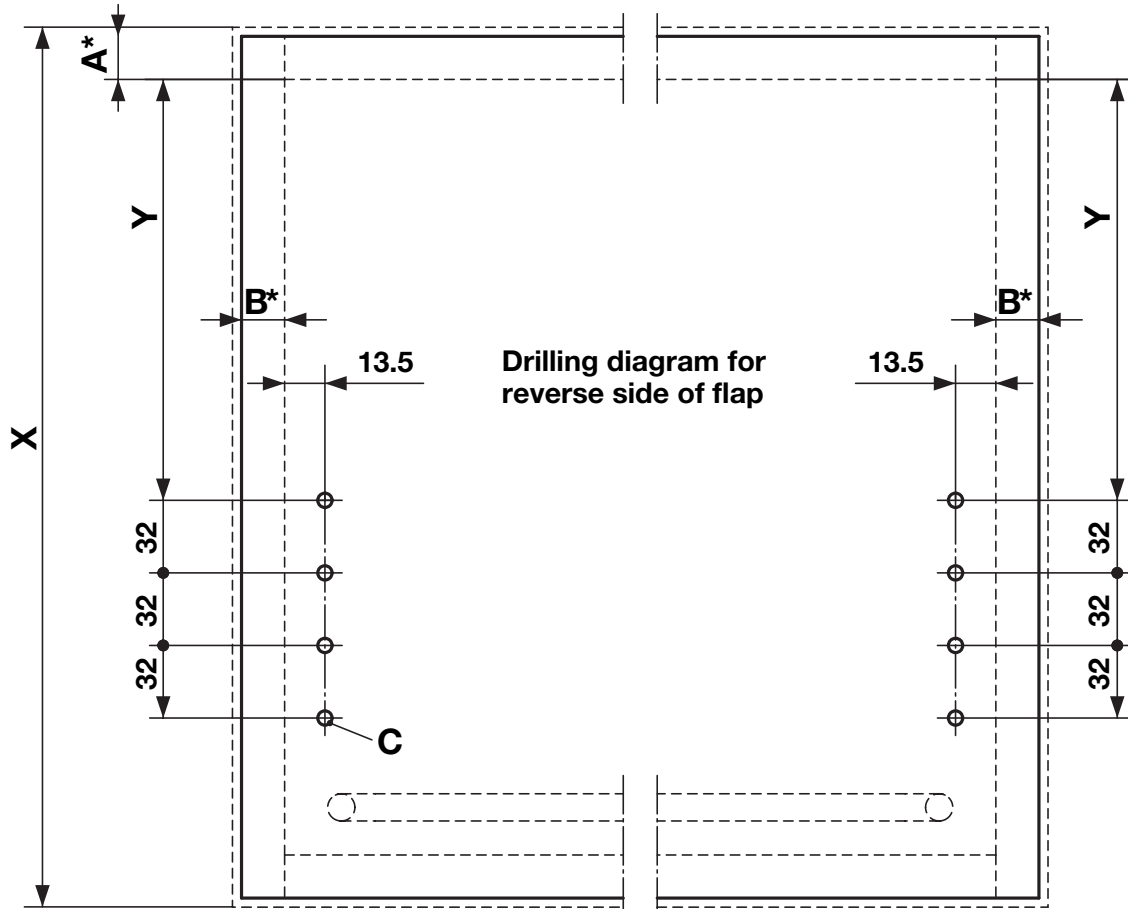
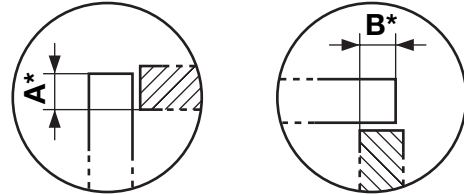


6

Drill holes for flap according to the drilling diagram. Lift-up fitting – strato



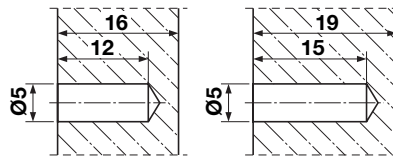
Design for particle board and MDF board.



Drilling diagram for reverse side of flap

A* and B* = observe overlay!

C = Drilling depth



X	Y
342–420 mm	186 mm
420–500 mm	255 mm
500–550 mm	293.5 mm
550–650 mm	313.5 mm

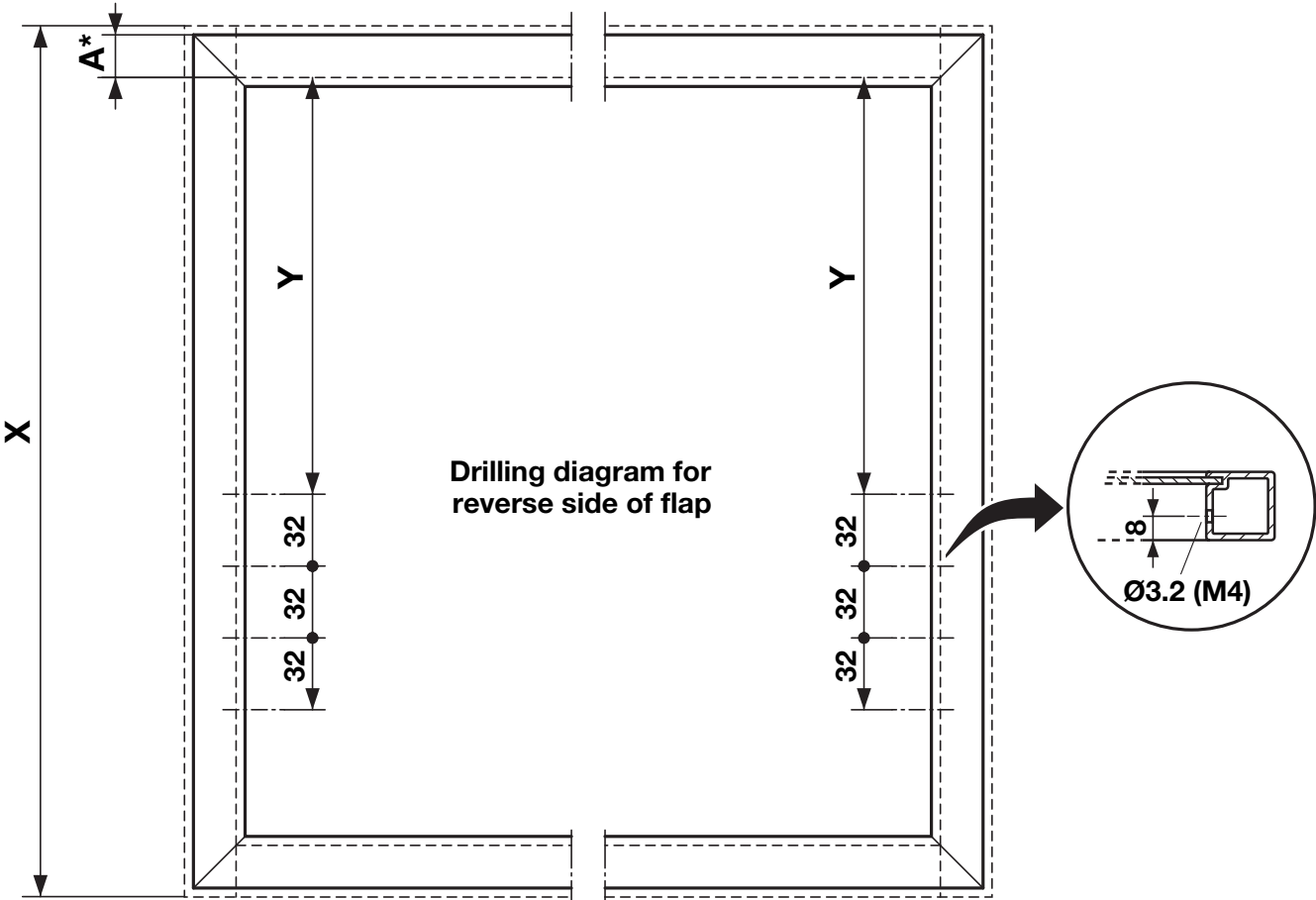
7

Drill holes for flap in according to the drilling diagram. Lift-up fitting – strato



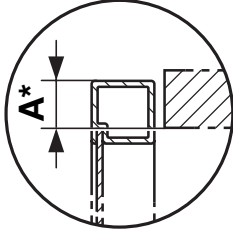
Design for 20 mm aluminum frame profile.

Cabinet height 420-650 mm



Drilling diagram for reverse side of flap

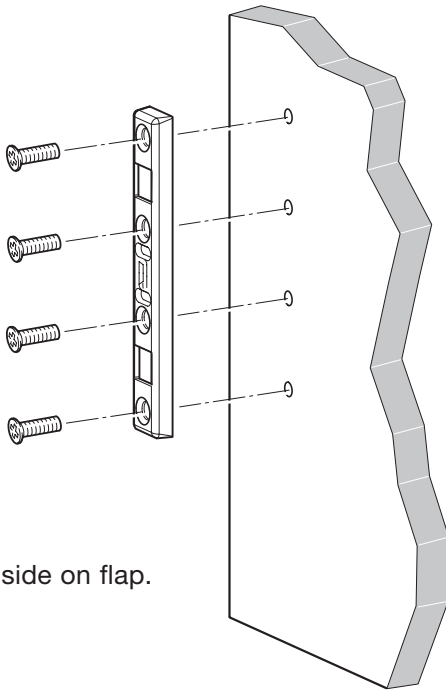
A* = observe overlay !



X	Y
342 – 420 mm	186 mm
420 – 500 mm	255 mm
500 – 550 mm	293.5 mm
550 – 650 mm	313.5 mm

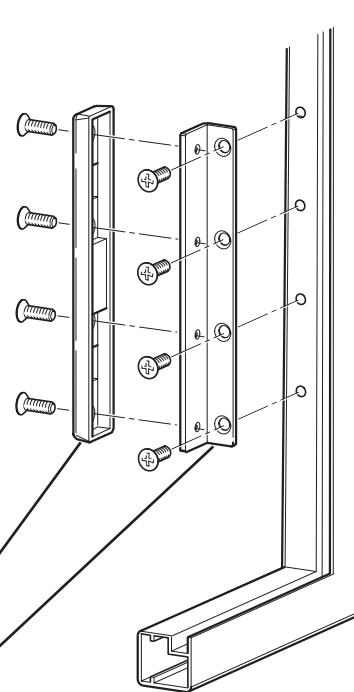


Design for particle board and MDF board.



Left and right side on flap.

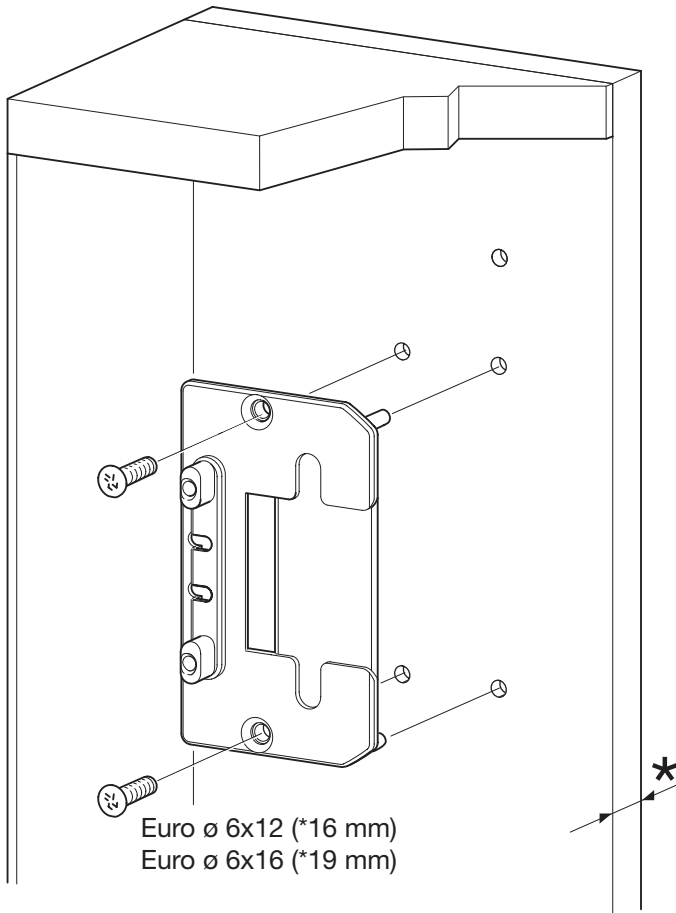
Design for aluminum frame profile.



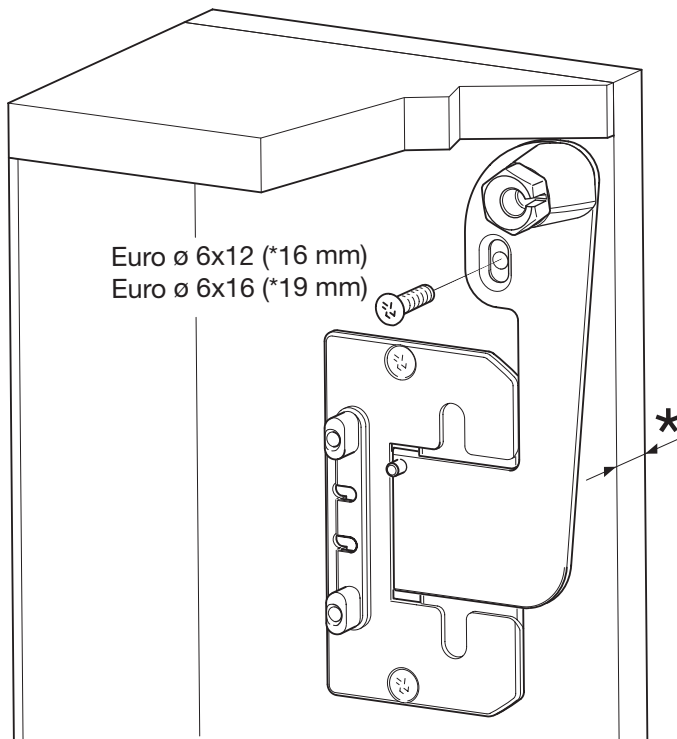
Fixing set for fixation brackets
(Not included in Set, to be ordered separately!)

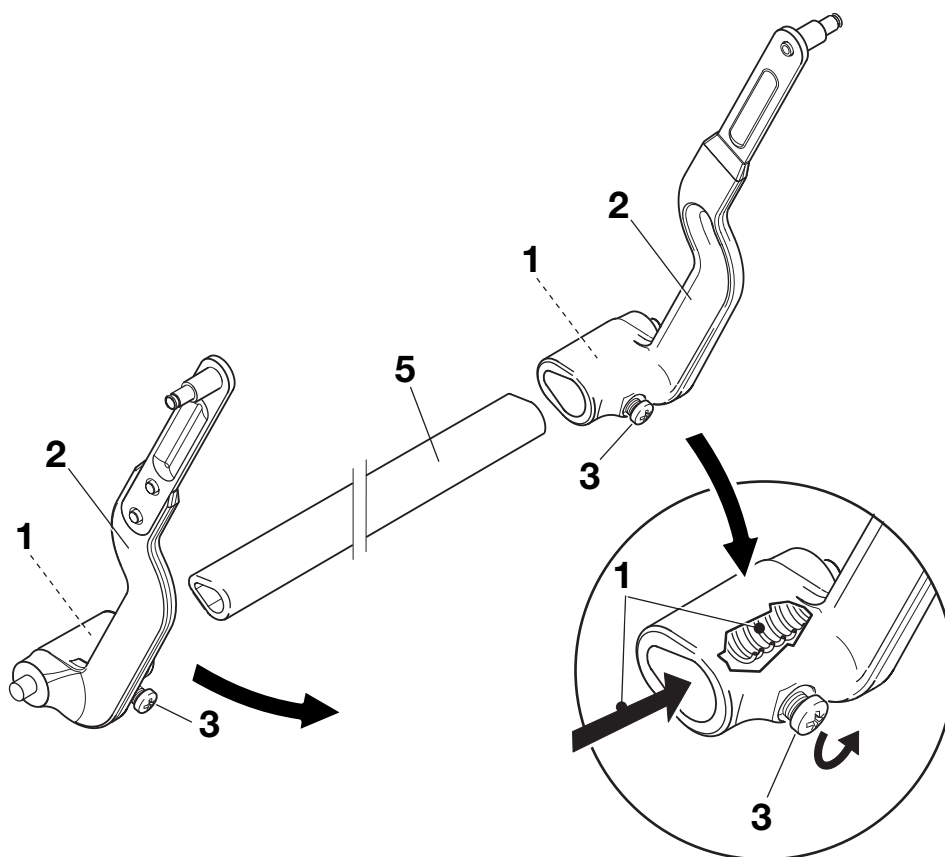
9

Screw on the base fixing plate and right/left adapter-plate.

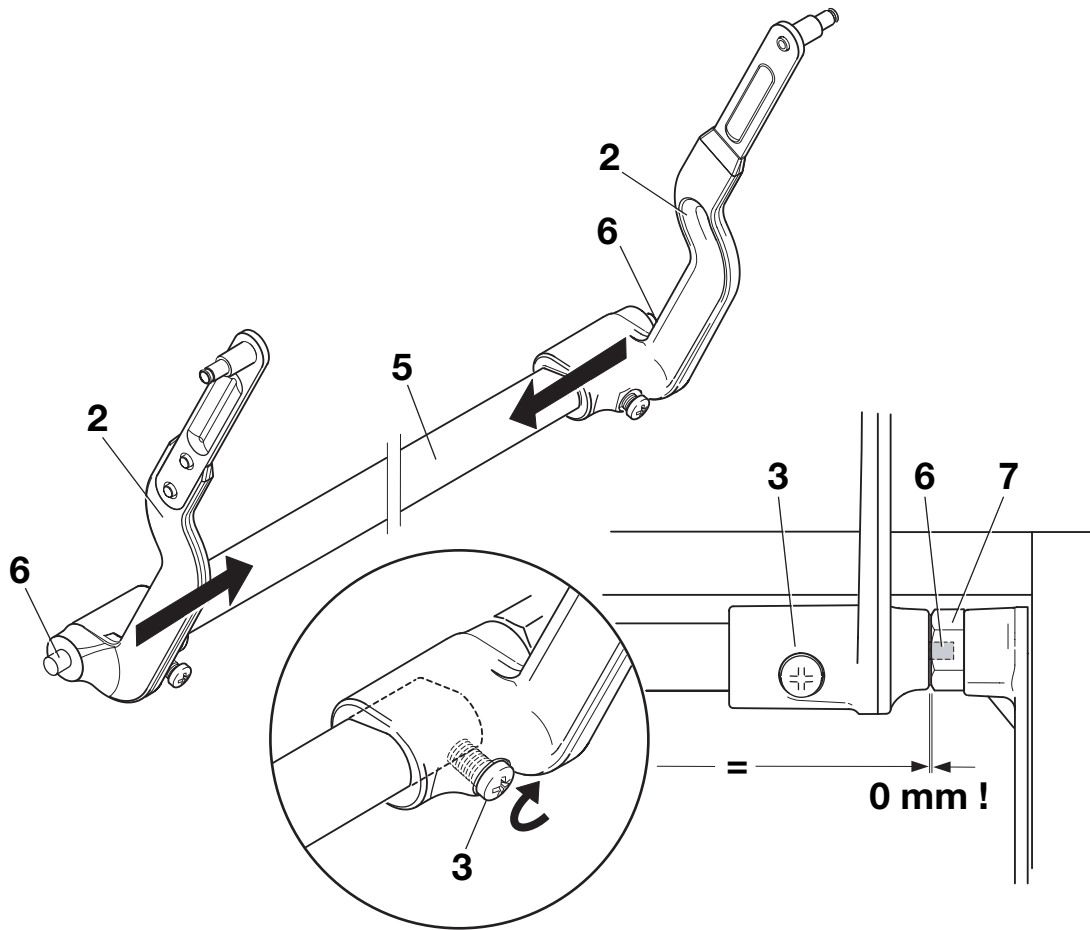


View of right side wall.
(Left side wall symmetrical)
The base plate can be used for
both sides (**right and left**)

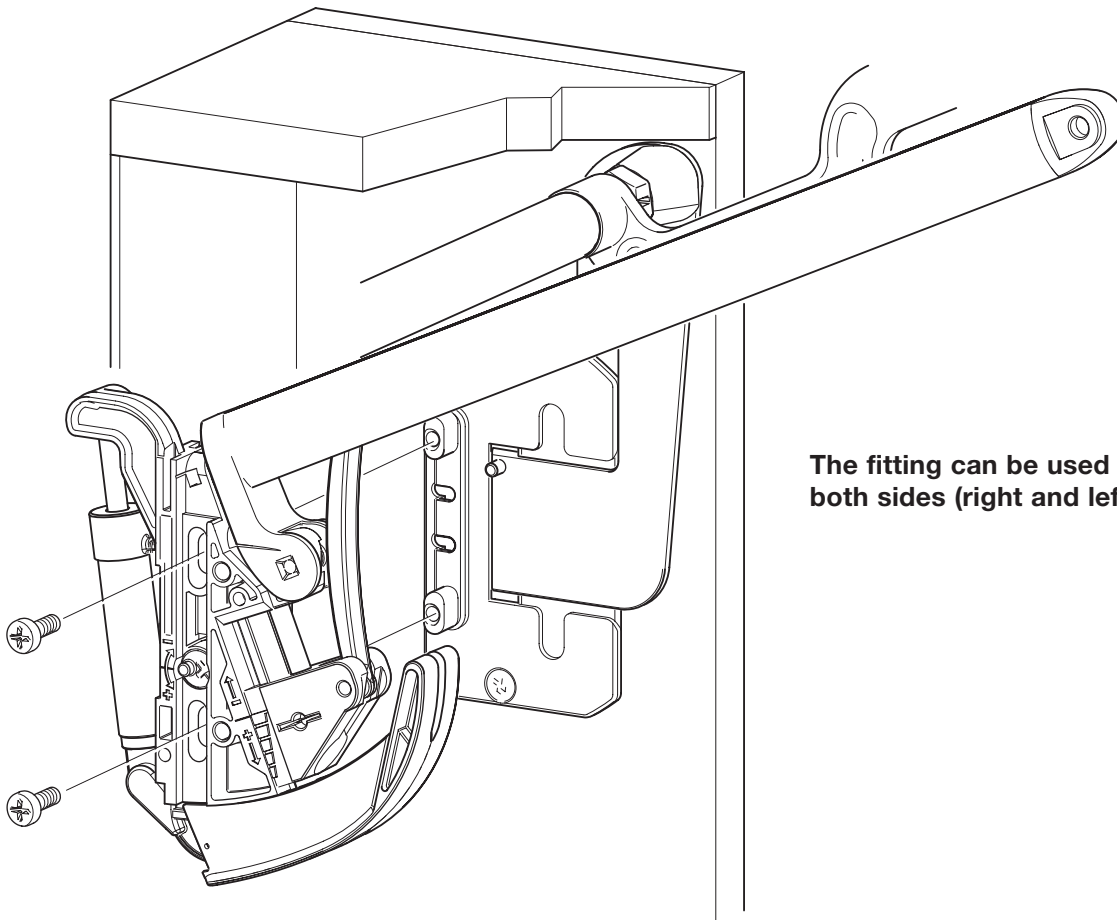


10**Install transversal stabilization bar.
Lift-up fitting verso/strato**

Visual control: Has compression spring **1** fitted in traction lever **2**? (If not, please do so.)
Slightly loosen clamp screws **3**. Connect traction lever **2** and stabilization bar **5**.



Press traction lever **2** / stabilization bar **5** together (Spring tension) and engage successively with axis pieces **6** traction lever bearing **7**. Fit into the cabinet without free play. Tighten both clamp screws **3** (**2-4 Nm**).

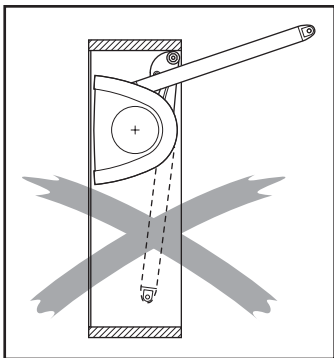


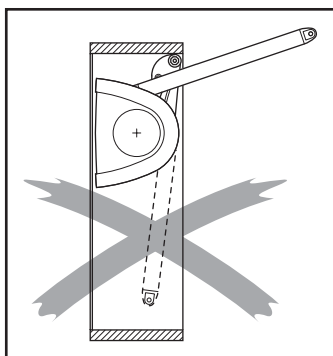
The fitting can be used for both sides (right and left).



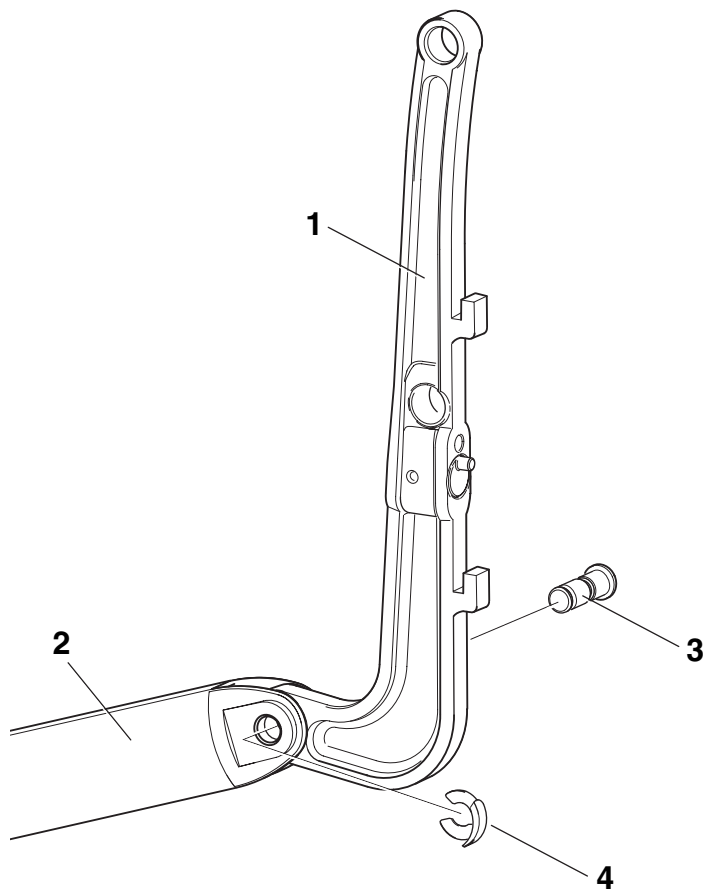
Attention!

The lifting arm of the fitting must be in the open position (supply condition) as otherwise there is a risk of injury! Fitting is under spring tension.





View of right side. (left side symmetrical)



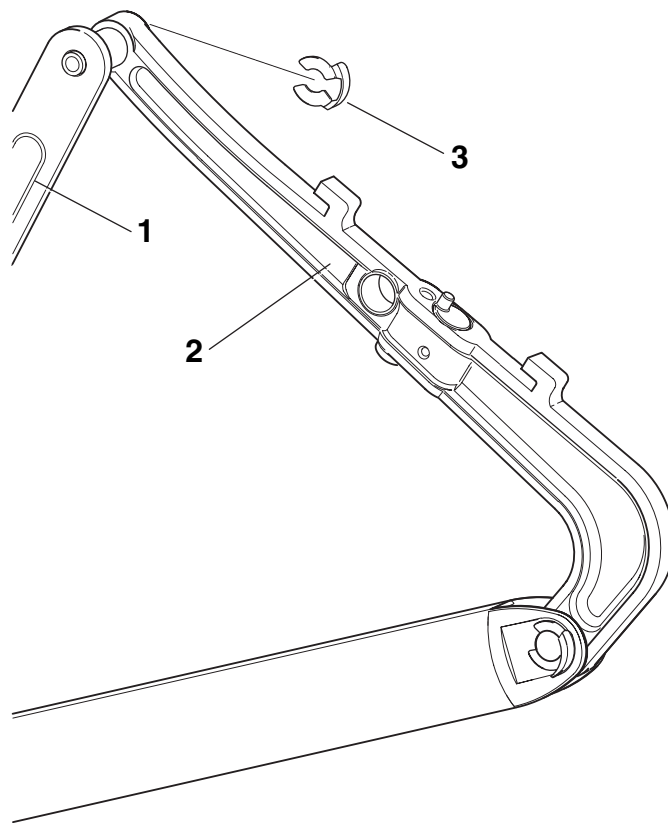
The regulation part can be used for both sides (**right and left**).
Connect regulation part **1** and lifting arm **2** with bolt **3** and secure with fixation clip **4**.

13

Connect traction lever.



View of right side. (left side symmetrical)

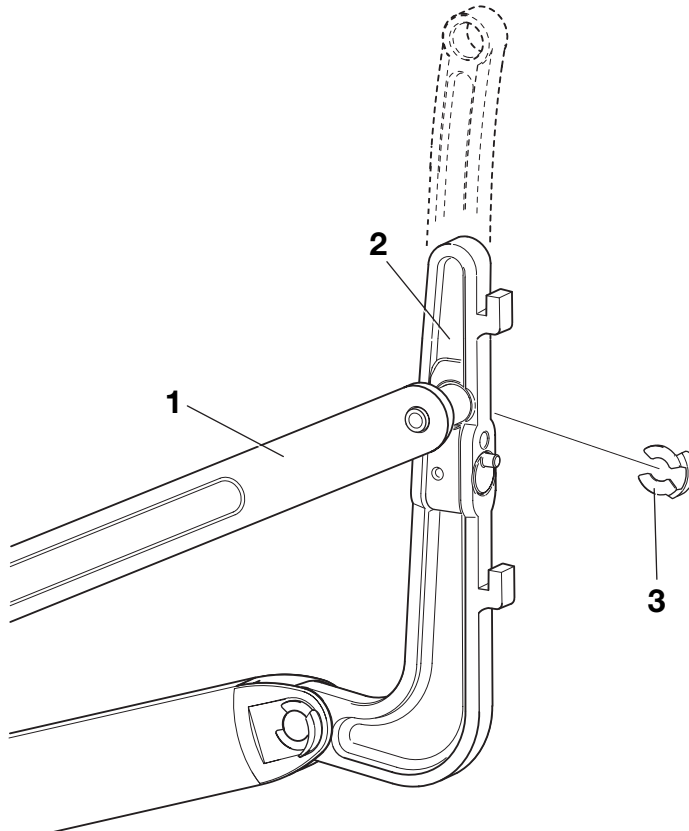


Connect traction lever **1** with regulation part **2** and secure with fixation clip **3**.



Lift-up fitting strato

View of right side. (left side symmetrical)



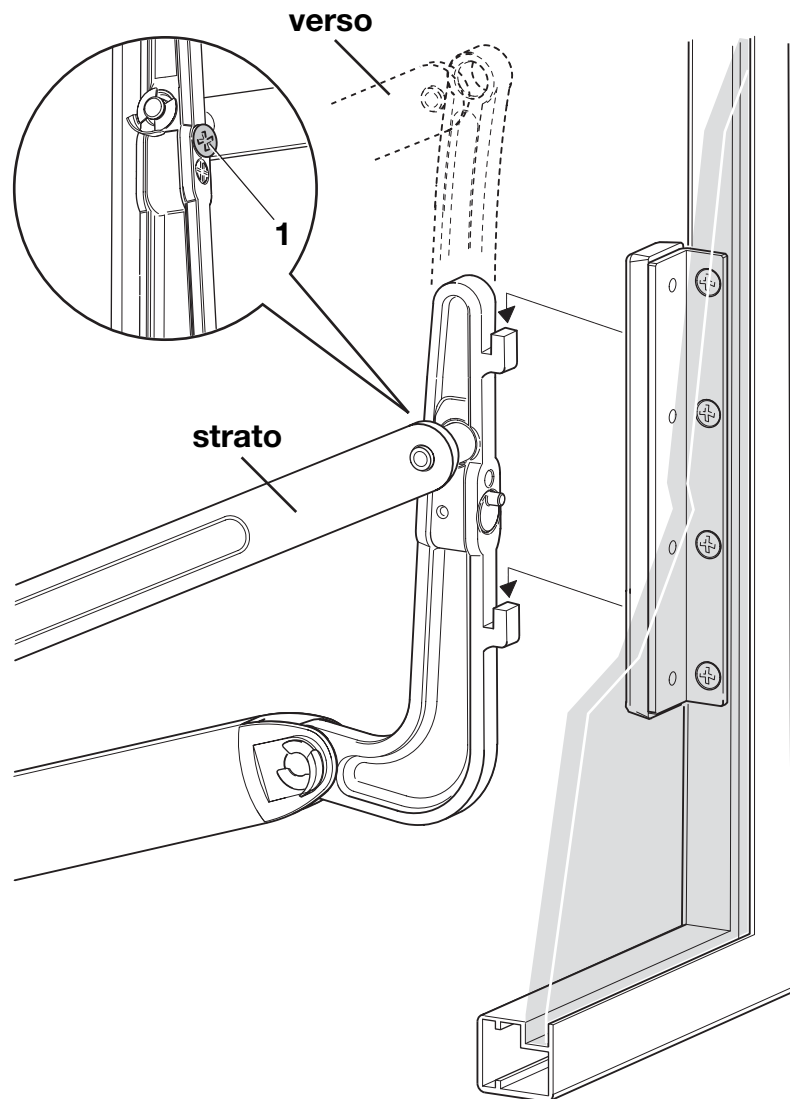
Connect traction lever **1** with regulation part **2** and secure with fixation clip **3**.



For all designs.

View of right side. (left side symmetrical)

Hang in cabinet flap and secure with screw **1**. For adjusting reasons the cabinet flap must have some free play, do not fully tighten the screw.

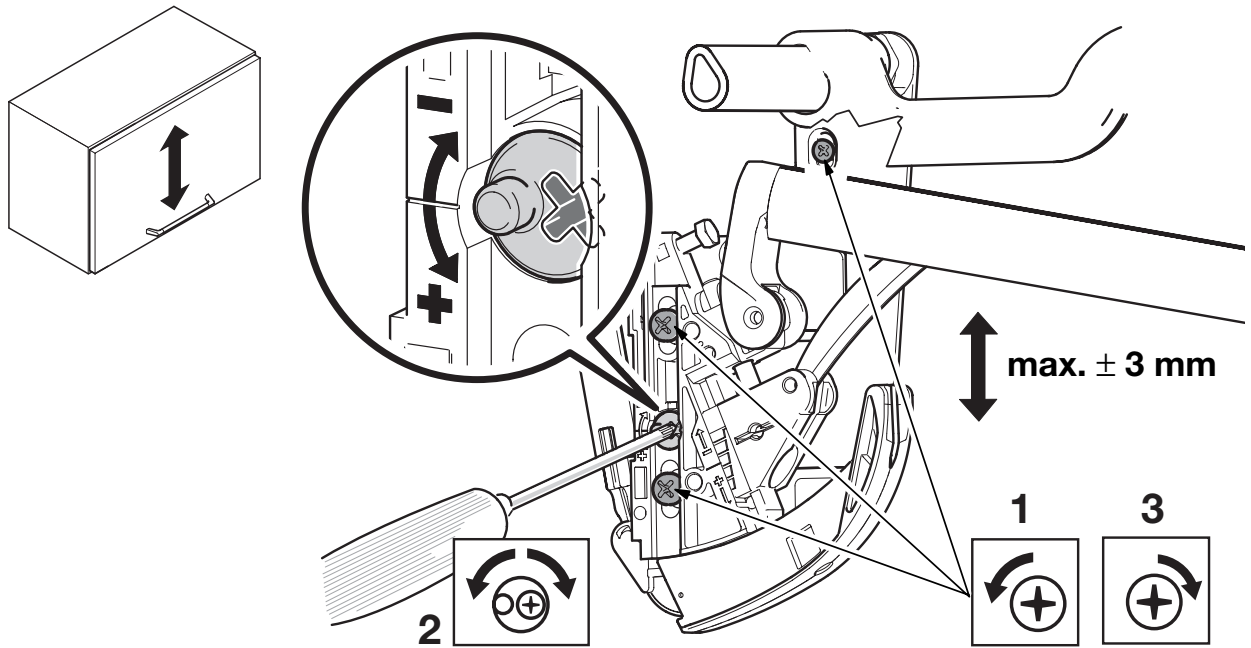




View of right side. (left side symmetrical)

Height fine-adjustment

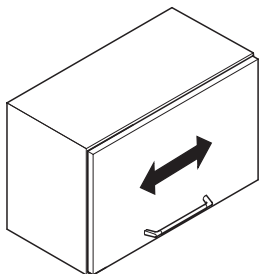
The height adjustment of the cabinet flap is done through the excenter screw at the fitting (see scale). Please loosen fixing screws.



Fine-adjustment according to flap alignment. Lift-up verso/strato

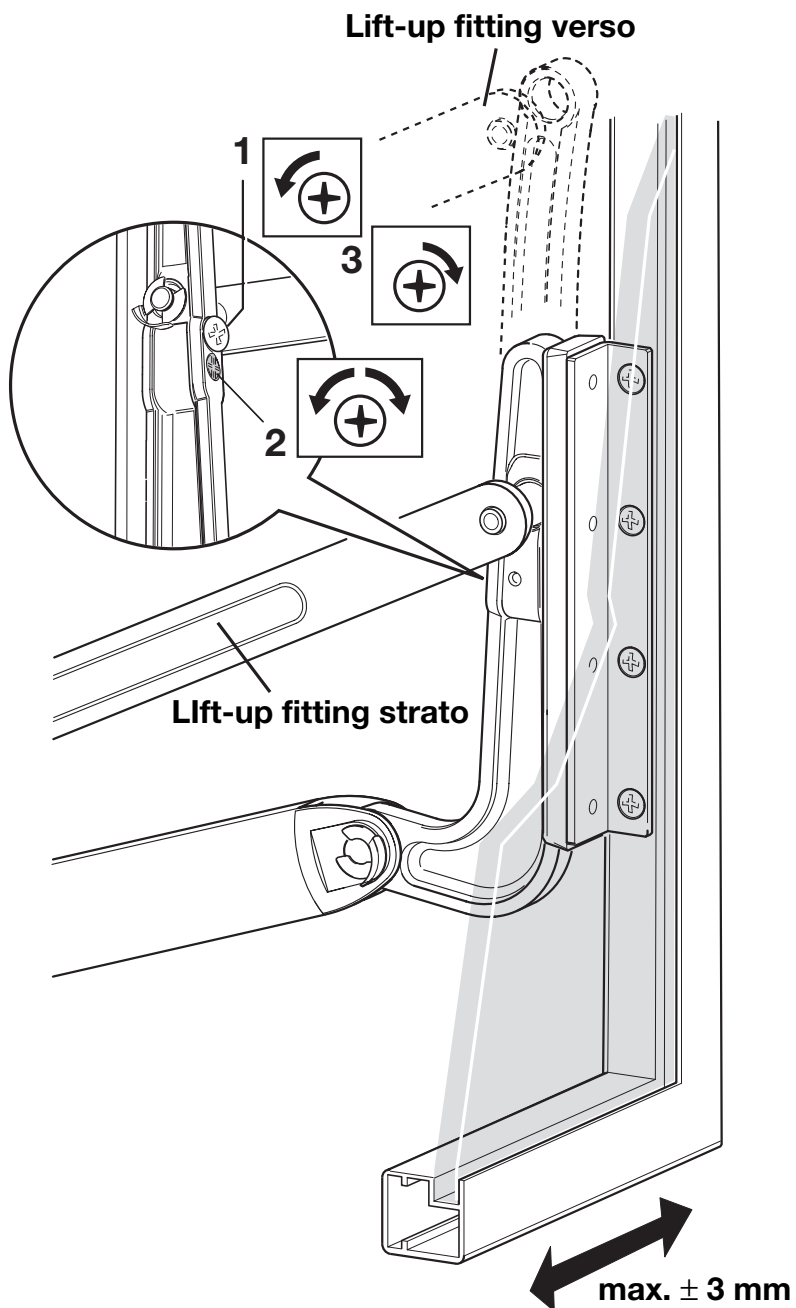


View of right side. (left side symmetrical)



Fine-adjust

The fine-adjust according to flap alignment is done by means of the excenter screw **2** on the regulation part. Tighten the fixing screw **1** after adjustment.

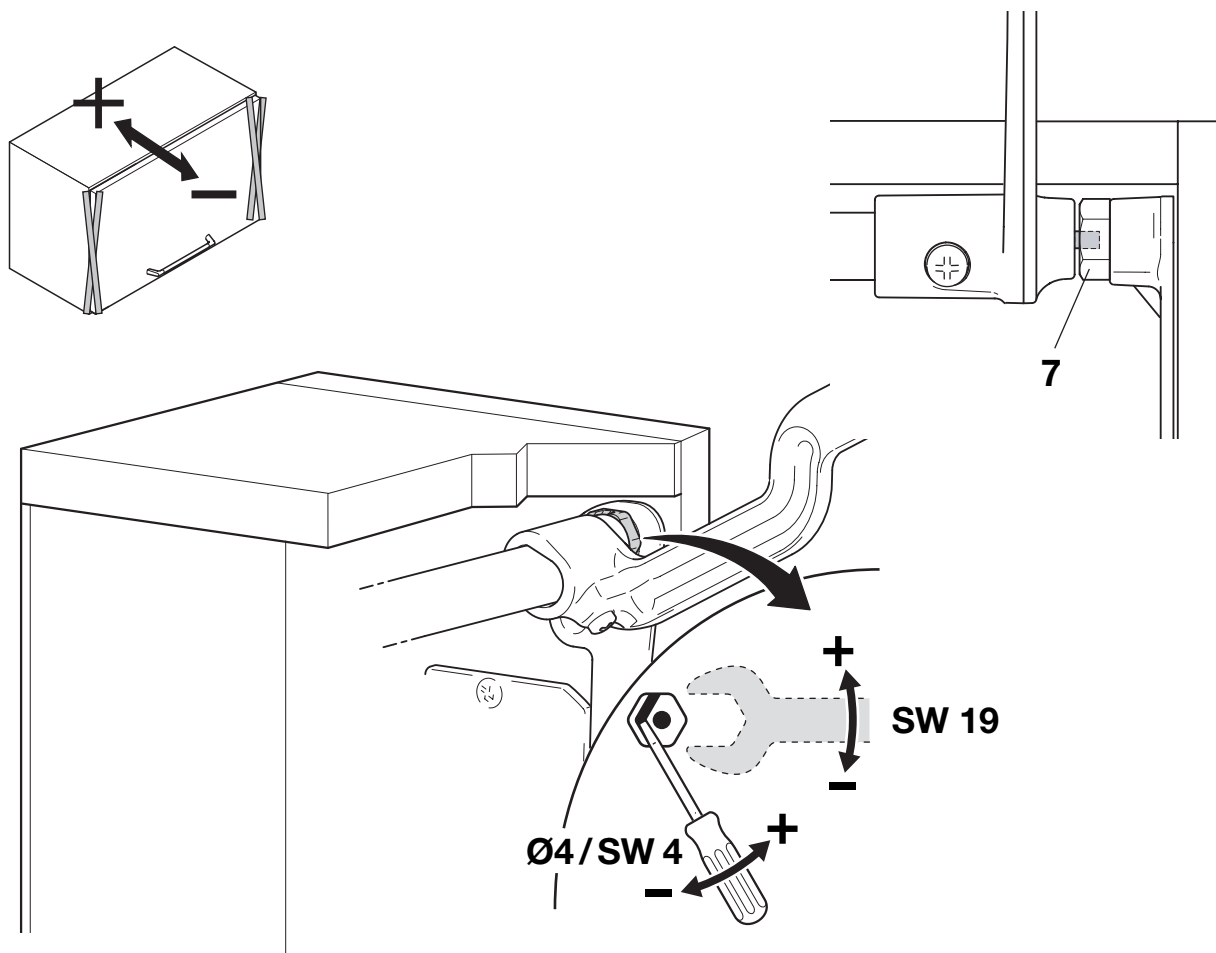


17

**Fine-adjust according to flap inclination.
Lift-up verso/strato**

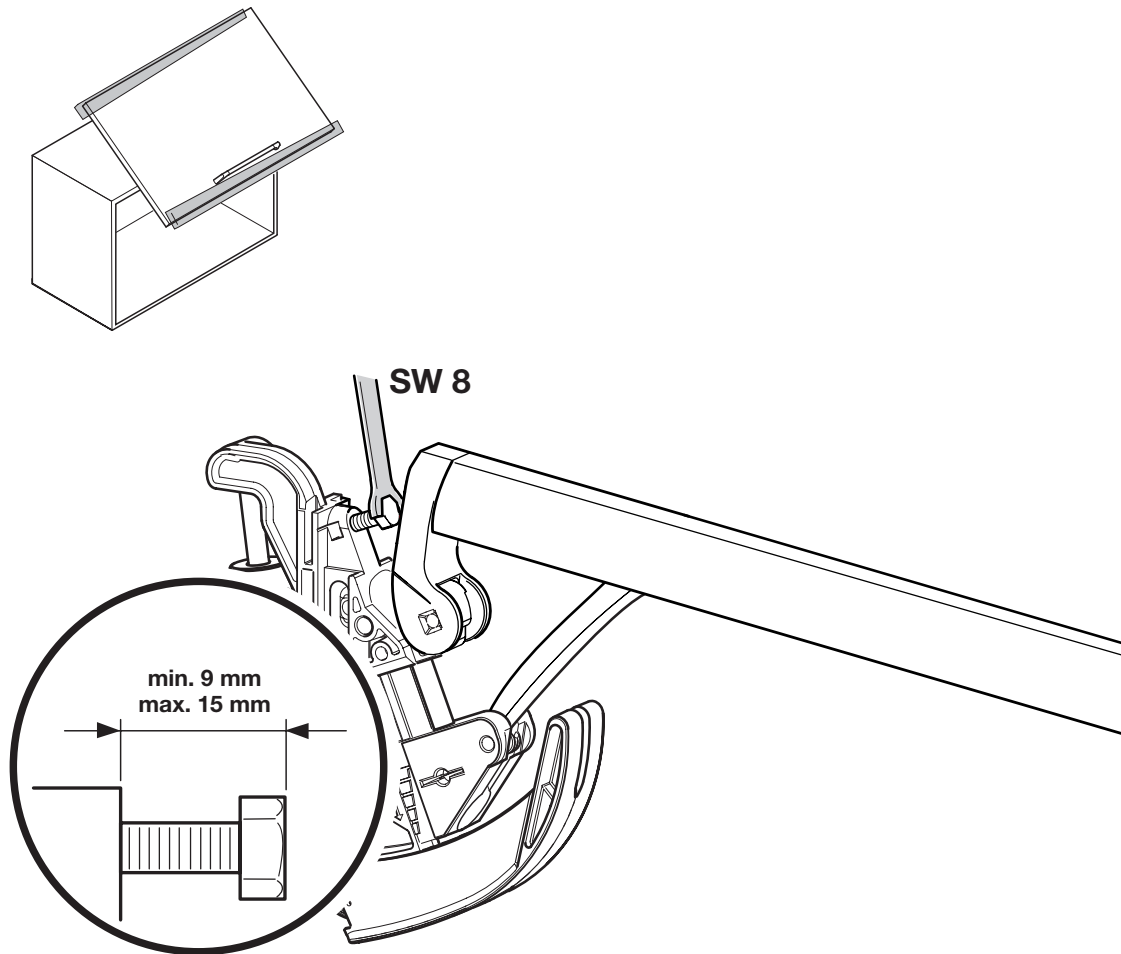


View of right side. (left side symmetrical)



Inclination of the flap in closed position

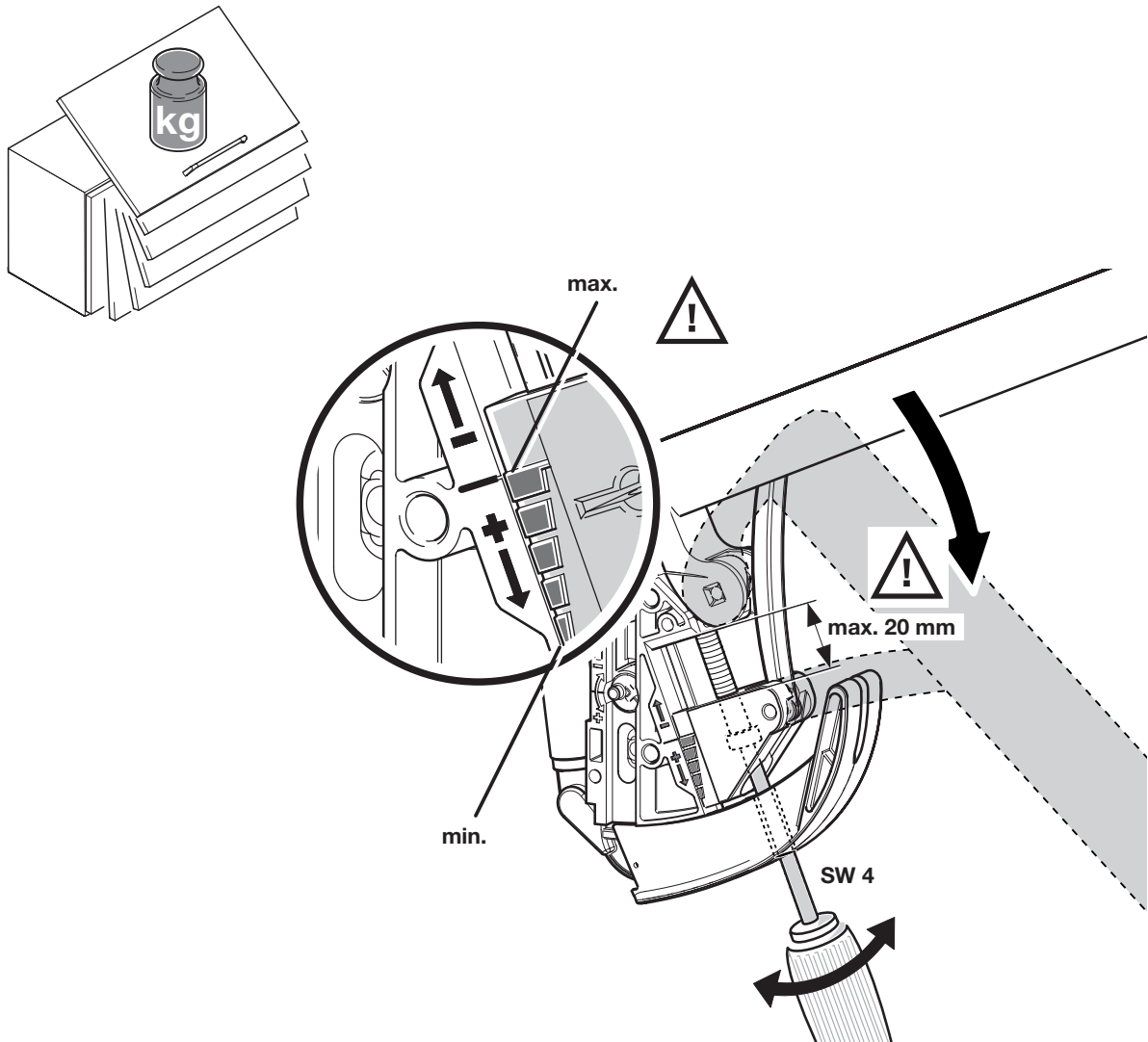
The flap inclination is adjusted at the excenter 7 of the receptive base plate for the traction lever.



The adjustment of the final stop (**abt. 12 mm**), pre-set by the factory, is done through the stop-screw. To do this pull the lifting-arm / flap slightly downwards.

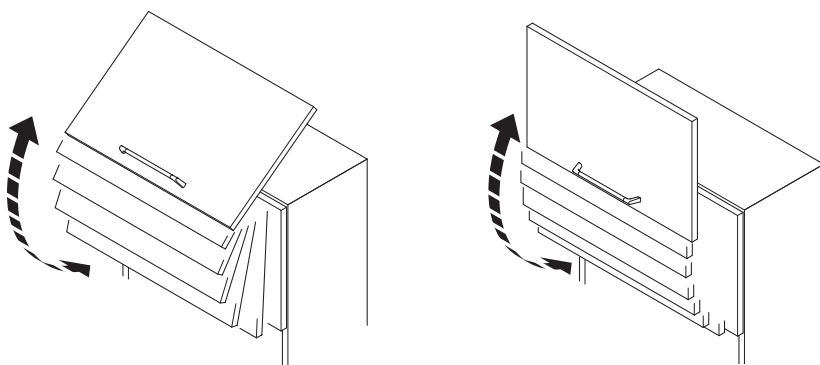


The power-adjustment for the flap weight is done through the hex screw. (See scale) To do this pull lifting arm / flap downwards and adjust as shown.



20

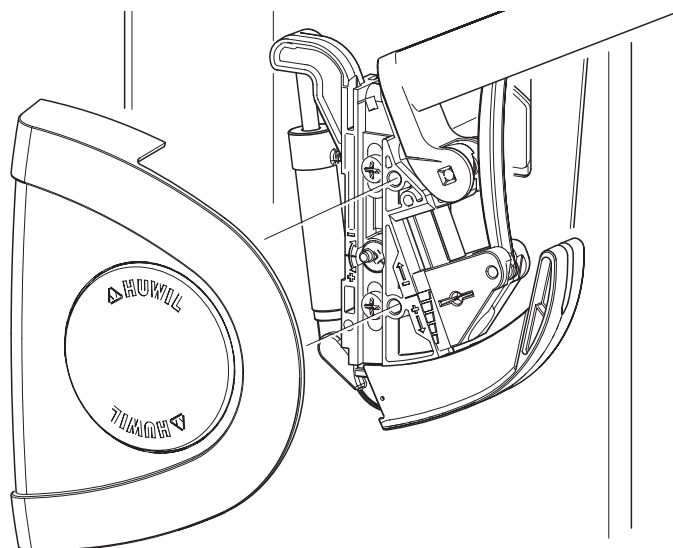
Carry out functional test.



If everything has been adjusted correctly the flap will stop in any position from 20 cm opening and on.

21

Install the housing-cover.





The correct model results from the height and weight of the flap, see chart. Choose the transversal stabilization bar according to the width of your cabinet.

Verso (without transversal stabilization bar)

Cabinet height [mm]	Flap weight [kg]		Part-No.
420 – 550	2.0	4.0	03.3684.001.001
	4.0	8.0	03.3684.001.002
	6.0	10.0	03.3684.001.003
	8.0	17.0	03.3684.001.004
550 – 650	2.0	3.5	03.3684.001.001
	3.5	7.0	03.3684.001.002
	6.0	10.0	03.3684.001.003
	9.0	16.0	03.3684.001.004
650 – 800	3.0	6.5	03.3684.001.002
	5.0	10.0	03.3684.001.003
	9.0	15.0	03.3684.001.004



Transversal stabilization bar for verso

Cabinet width [mm]	Side wall thickness [mm]	Bar length [mm]	Part-No.
600	16	490	04.3684.801.000.0490.00
	19	484	04.3684.801.000.0484.00
900	16	790	04.3684.801.000.0790.00
	19	784	04.3684.801.000.0784.00
1200	16	1090	04.3684.801.000.1090.00
	19	1084	04.3684.801.000.1084.00

Further versions on request.

We reserve the right for technical modifications.



The correct model results from the height and weight of the flap, see chart. Choose the transversal stabilization bar according to the width of your cabinet.

Lift-up fitting strato (without transversal stabilization bar)

Cabinet height [mm]	Flap weight / Part-No. [kg]			
	342 342 – 420	1,5 – 4,0 03.3685.011.001	4,0 – 7,2 03.3685.011.002	6,5 – 11,5 03.3685.011.003
420 420 – 500	2,0 – 3,5 03.3685.012.001	3,5 – 7,0 03.3685.012.002	6,5 – 11,0 03.3685.012.003	8,0 – 16,0 03.3685.012.004
500 500 – 550	—	—	3,8 – 10,0 03.3685.013.003	6,0 – 15,0 03.3685.013.004
600 550 – 650	—	—	3,5 – 10,0 03.3685.014.003	6,0 – 14,5 03.3685.014.004



Transversal stabilization bar for strato

Cabinet width [mm]	Side wall thickness [mm]	Bar length [mm]	Part-No.
600	16	490	04.3684.801.000.0490,00
	19	484	04.3684.801.000.0484,00
900	16	790	04.3684.801.000.0790,00
	19	784	04.3684.801.000.0784,00
1200	16	1090	04.3684.801.000.1090,00
	19	1084	04.3684.801.000.1084,00

Further versions on request.

We reserve the right for technical modifications.

HÄFELE

3901 Cheyenne Drive

P.O. Box 4000

Archdale, NC 27263

1-800-423-3531

www.hafele.com