

SAFE-O-MAT®

Series 500 for Wood and Plastic Laminated Lockers



Warranty

SAFE-O-MAT® locks are guaranteed against defects in material and workmanship for a period of one year after the date of shipment under normal use, care and service. Deliberate destruction, vandalism and damage resulting from faulty installation is not covered by this warranty.

Any repairs, adjustments or replacements will be made upon return of defective items to the United States sales office by prepaid shipment. SAFE-O-MAT® locks will not be liable for any amount greater than the original purchase price of the defective item, plus the initial shipping cost.

Contents	Page
Warranty	2
Introduction	3
Lock Operation	3
Keys and Cylinders	3
Coin or Token Operation	4
Return or Collect Operation	4
Lock Operation	4
Return Operation	4
Collect Operation	4
Installation	5
Maintenance	6
Lubrication Every Six Months	6
Ordering Keys	6
Replacing Lost Key	6
Removing Broken Key	6
Retrofitting	7
Coin or Token Operation	8
Cylinder Replacement	8 & 9
Lock Diagram	10
Lock Parts List	10
Key Parts List	11
Mounting Parts List	11
Decals	12
Adapters and Accessories	12

S500 Lock Cylinders

All S500 locks are available with two types of lock cylinders.

Promax Cylinder

The Promax Cylinder prevents any undetected locker from opening without the user's knowledge.

The Master Key will unlock the Lock when it's being used (locked). When the Key unlocks the Lock, the Cylinder disengages from the Lock and cannot be reinserted into the Cylinder.

Refer to page 10 for information regarding replacing the Cylinder into the Lock.

Penalty Cylinder

The Penalty Cylinder works like the Promax Cylinder except that it uses a master key called a Penalty Master Key. This Key can unlock and relock a locker while it is in use without the user's knowledge.

S500 Lock Keys

User Key

Each Lock ships with a User Key inserted into the Cylinder. This Key will only work with that Cylinder. Should the Key be lost or damaged, a User Key must be installed in the Cylinder.

Promax Cylinder Change Key

Each Lock order specifying Promax Cylinders is shipped with a Promax Cylinder Change Key. This Key is only used to remove the Lock Cylinder. The Cylinder can only be reinserted into the Lock with a User Key. Refer to page 10.

Mounting Key

This Key Locks the deadbolt when the Cylinder is removed from the Lock.

Often when lockers are shipped with the Lock installed, it is necessary to remove the Lock Cylinder to prevent breakage of the Keys. Keys do not have numbers and therefore cannot be separated from their respective Cylinders. In order to hold the locker doors in a closed or fixed position, the Mounting Key is used to place the deadbolt into a locked position, keeping the doors closed.

Master Key

Each Lock order specifying Master Key Cylinders requires a Master Key to be purchased with the order (this must be specified on the purchase order). This Key unlocks and re-locks lockers being used. A Cylinder Change Key must also be purchased with the lock order.

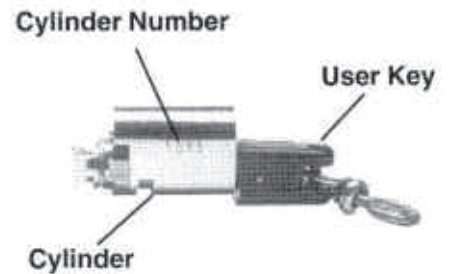


Figure 7 — Promax Cylinder

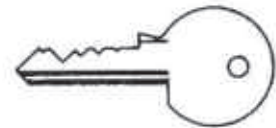


Figure 8 — Promax Cylinder Change Key



Figure 9 — Mounting Key

The Series 500 Lock is intended for use with wooden or plastic lockers. It is a deposit lock with a Card Adapter mounted to the lock.

The Lock accepts a Card (not supplied by SAFE-O-MAT® - refer to figure 11) and can also accept a token or coin (quarter) as the deposit.

The User Key cannot be removed unless the correct deposit is inserted. When a card is used, the card cannot be removed until the key is reinserted and turned fully clockwise (unlocking the locker).



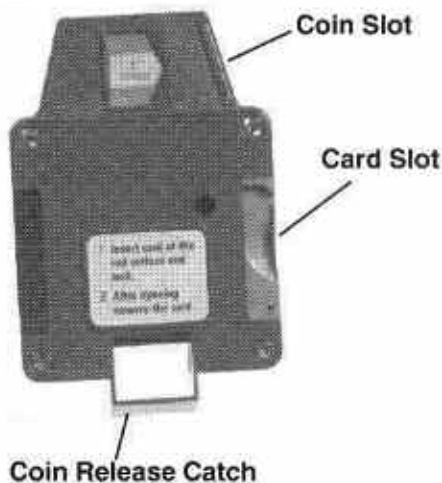
Figure 11 — S500 Card. Safe-O-Mat does not supply cards.

Lock Operation

1. The door can be closed and locked by inserting a card, coin or token into the Coin Slot.
2. Close the door and turn the User Key counterclockwise, locking the Lock.
3. Withdraw the key. The card, if used, will be held captive.
4. To open the locker, insert the User Key and turn the key counterclockwise. The card, if used, can be removed.

Coin or Token Operation

Locks can be set for coin (quarter) or token operation or it can be set to accept neither. See page 10 for more information.



Coin Return Lock Operation

When the Lock is set for Return Operation and a correct deposit is inserted:

- The key can be turned counterclockwise, locking the locker.
- When the key is inserted and turned clockwise (unlocking the locker), the deposit is returned to the deposit catch. The card is released and can be removed without inserting another deposit.

Coin Collect Lock Operation

To operate the Lock when it is set for Collect Operation, do as follows:

- Insert the correct deposit.
- Close the locker door and turn the key counterclockwise, locking the locker.
- The deposit drops into the coin box.
- When the key is inserted and turned clockwise (unlocking the locker), the key cannot be removed without inserting another deposit.

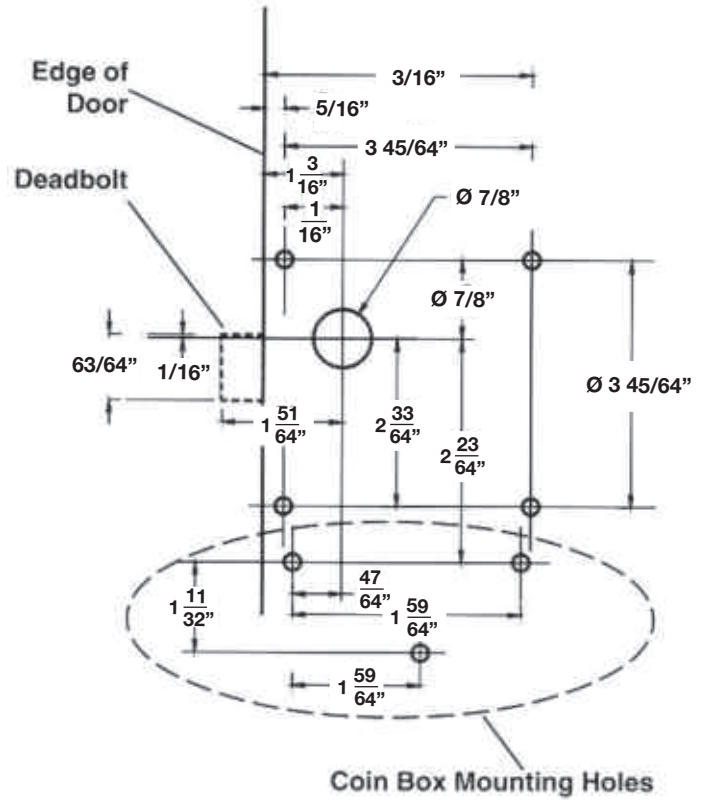
Installation

Note: Series 500 Locks can be ordered to mount on left hand or right hand locker doors.

Refer to page 7 to retrofit existing locks with S500 locks.

Return Lock Installation

1. Use the hole pattern at the right to drill a 7/8 inch diameter hole for the Lock Cylinder. The center of the hole should be 1-3/16 inches from the edge of the door.
2. The Door Strike style and location varies with different manufacturers.
3. Use the mounting screws supplied with the Lock and fasten the Lock to the inside of the door.
4. For wood lockers and if using the nylon inserts supplied with the Lock, apply a small amount of construction adhesive to the out side of the nylon inserts before installing,
5. Apply the Instruction Decal on the outside of the door.



S500 Lock **S500 Hole Pattern**

Maintenance

Lubricate every 6 months.

Apply a silicone spray, such as WD-40™ to the Lock Cylinder.

Whenever it is difficult to insert a key or turn the key, lubricate the lock.

Note: Do not spray lubricant into the Card Holder on the S500 locks!

Ordering Keys and Replacing Lost Keys

When a key is damaged, lost or not returned, replace the User Key. After a number of keyless cylinders accumulate, order keys for these cylinders and use them as spares.

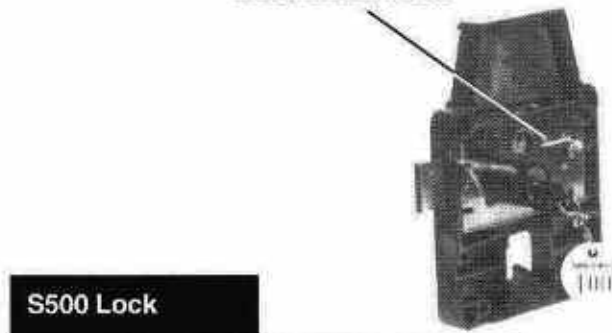
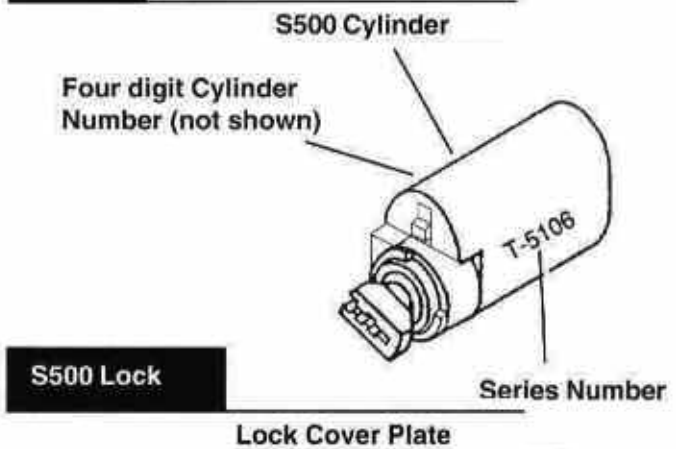
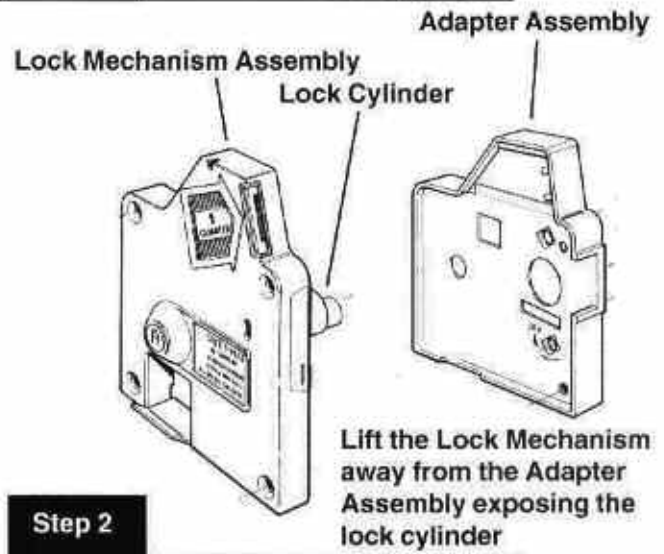
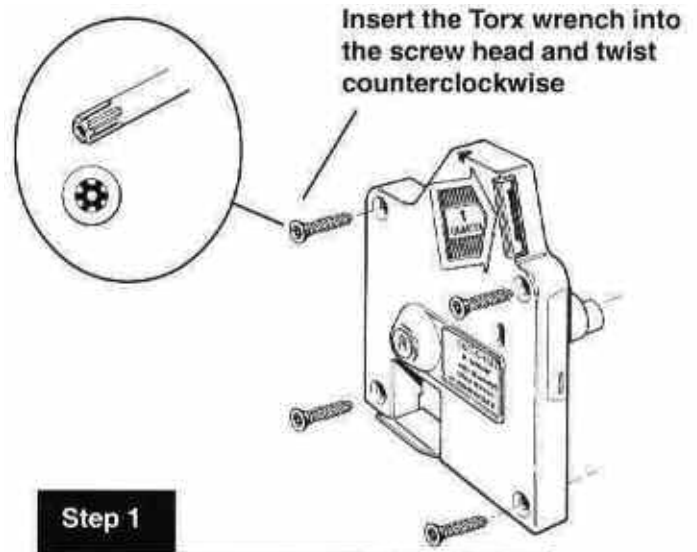
A key can be ordered for the S500 Lock by furnishing the key source with the Cylinder number. To view the Cylinder Number, do as follows.

1. Using a Cylinder Change Key, remove the Promax or Master Cylinder. Refer to page 10, step 1.
2. The Series Number and Cylinder Number is stamped on the outside diameter of the cylinder.
3. Install a new cylinder; refer to page 9 for information regarding inserting cylinders into S500 Locks.

To remove a broken key from a S500 Lock:

The Lock face is covered by the Cardholder and Adapter.

1. Try to pull the broken part of the key with a pair of needle nose pliers.
2. If pulling the key out fails, remove the Lock from the locker door.
3. Remove the Locker Cover Plate and push a master key through the cylinder to force the broken key through the back of the cylinder.

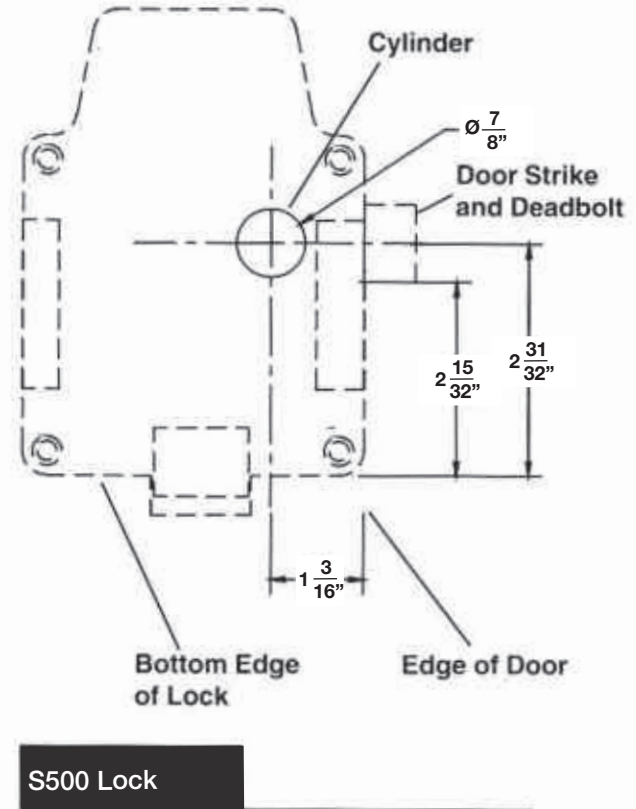


Retrofitting

Existing cylinder locks have a cam on the back of the locker door that rotates to engage the door strike. Normally the cam on an existing cylinder is horizontal with the door strike.

To retrofit the Lock, do the following:

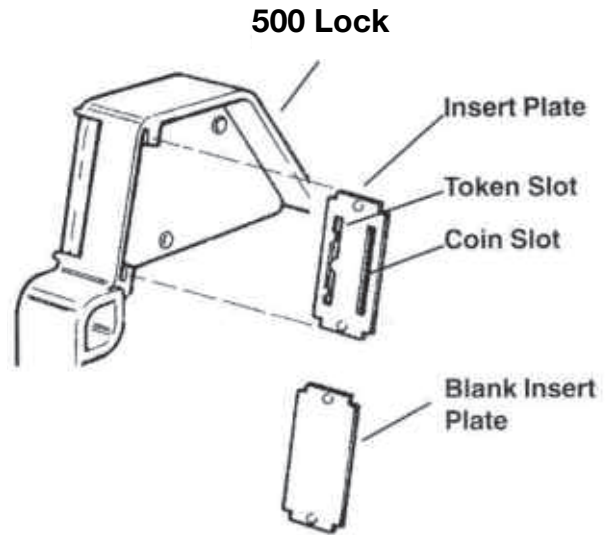
1. Remove the old lock.
2. Align the Lock deadbolt to the door strike while holding it to the door,
3. Mark the bottom edge of the lock on the door when the deadbolt is aligned to the door strike opening.
4. Drill a $\frac{7}{8}$ inch diameter hole $1\frac{3}{16}$ inches from the edge of the door and $2\frac{21}{32}$ inches from the bottom edge of the lock.
5. Place the Lock against the door with the cylinder inserted into the new hole and make sure that the deadbolt enters the strike plate.
6. If the deadbolt is positioned correctly, use the hardware furnished with the lock and mount it to the door. Make any adjustments to the new hole location by enlarging the hole as necessary.
7. On the outside of the Locker, place the 348TS decal on the door, centering the hole in the decal over the Lock Cylinder.



Coin or Token Operation

The S500 Lock is set at the factory to accept a coin or a token.

When the Locks are not intended to accept coins or tokens, a Blank Insert Plate is installed at the factory.



S 500

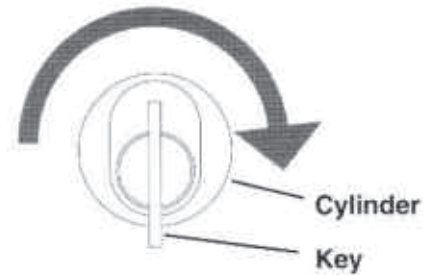
Cylinder Replacement

When it is necessary to open a locker in use or replace a Lock Cylinder, do the following:

Removal

1. Using a Cylinder Change Key for a Promax Cylinder insert the Key and turn clockwise about 10°.
2. The Cylinder will disengage from the Lock Mechanism. Pull the Cylinder straight out and away from the Lock.

Turn the Key clockwise about 10°



Step 1



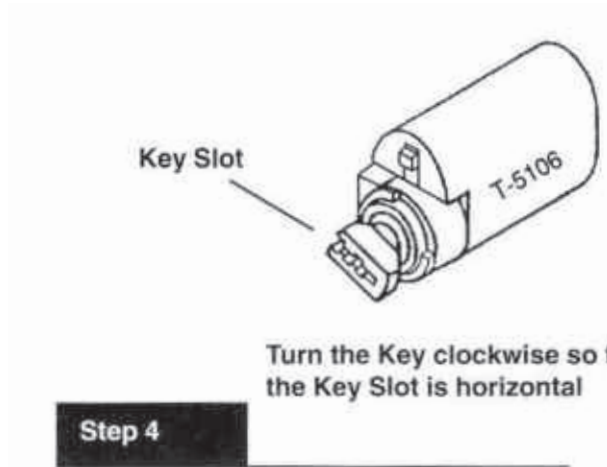
Pull the Cylinder from the Lock

Step 2

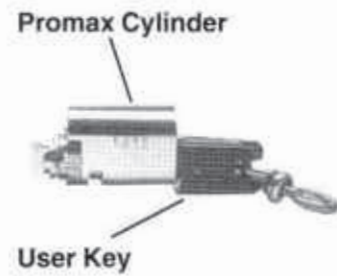
Promax Cylinder Replacement

Note: A Promax Cylinder can only be installed with the User Key in the Cylinder.

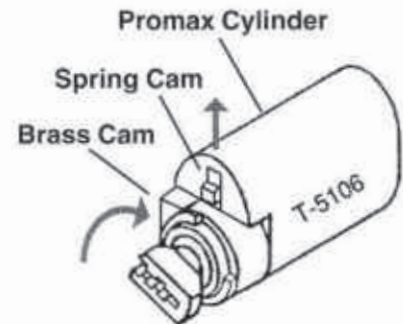
1. Position the master key vertically and pull out. Insert the user key.
2. Lift the Spring Cam upward and hold in the upper position.
3. Press the Brass Cam inward so that it is flush with the Cylinder Wall.
4. Turn the User Key 90° clockwise so that they Key Slot is horizontal.



5. With the User Key in the Cylinder, insert the Cylinder into the Lock Mechanism.
6. Turn the User Key clockwise. This engages the Cylinder with the Lock.



Step 1



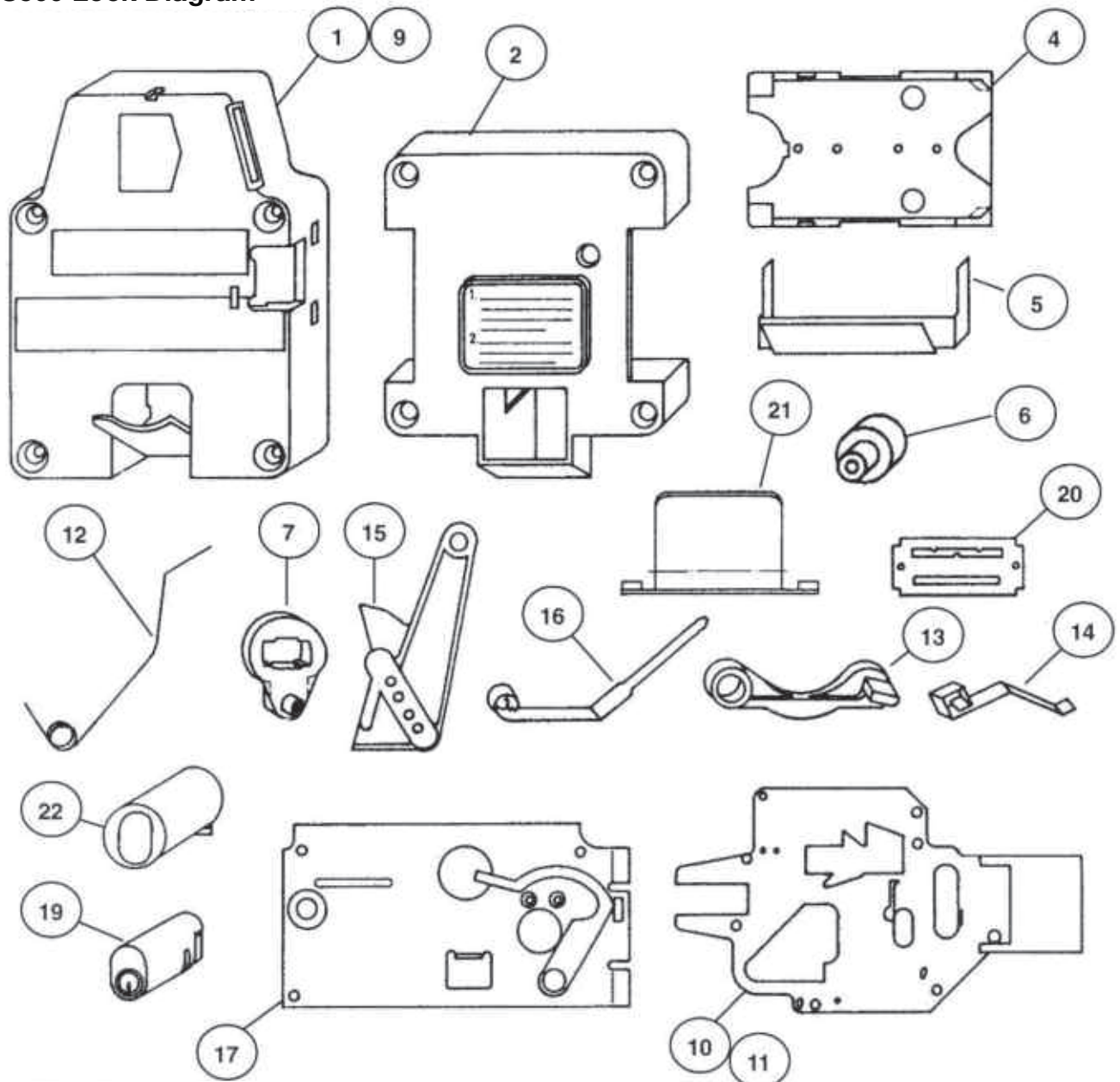
Step 2 and 3

Insert the Cylinder and User Key into the Lock and turn clockwise



Step 5 and 6

S500 Lock Diagram

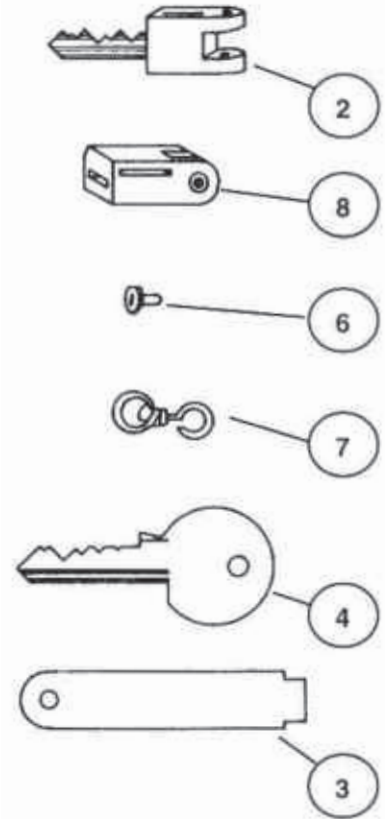


Lock Parts List:

Item	Number	Description	Item	Number	Description
1	201	Lock Case	12	411	Bolt Spring
2	202	Card Assembly Housing	13	413	Tumbler
4	203-C	Cardholder Assembly	14	415	Tumbler Spring
5	208	Deflector Shield	15	417	Coin Holder
6	216	Roll Pin	16	420	Coin Holder Spring
7	337	Promax Cam	17	421	Lock Cover Plate
8	354	Nylon Insert	19	518-P	Lock Cylinder with User Key
11	408-T	Lock Bolt	20	520	Insert Plate
			21	525D	Coin Return Tab
			22	421-H	Cylinder Housing

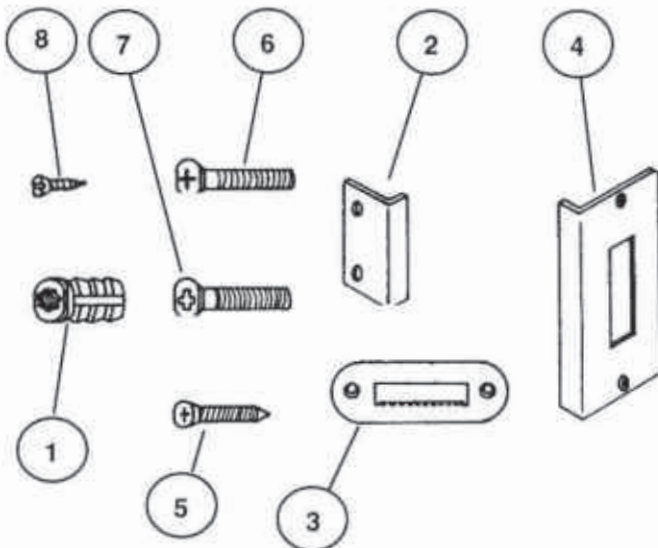
Key Parts List:

Item	Number	Description
1	376-M	Mounting Key Promax (not shown)
2	517	User Key
3	522M	Mounting Key
4	522	Promax Control Key
6	304	Rivet
7	309	Swivel
8	303	Key Handle
9	548	Coin Box Key
10		Promax Cylinder Change Key
11		Promax Penalty Key



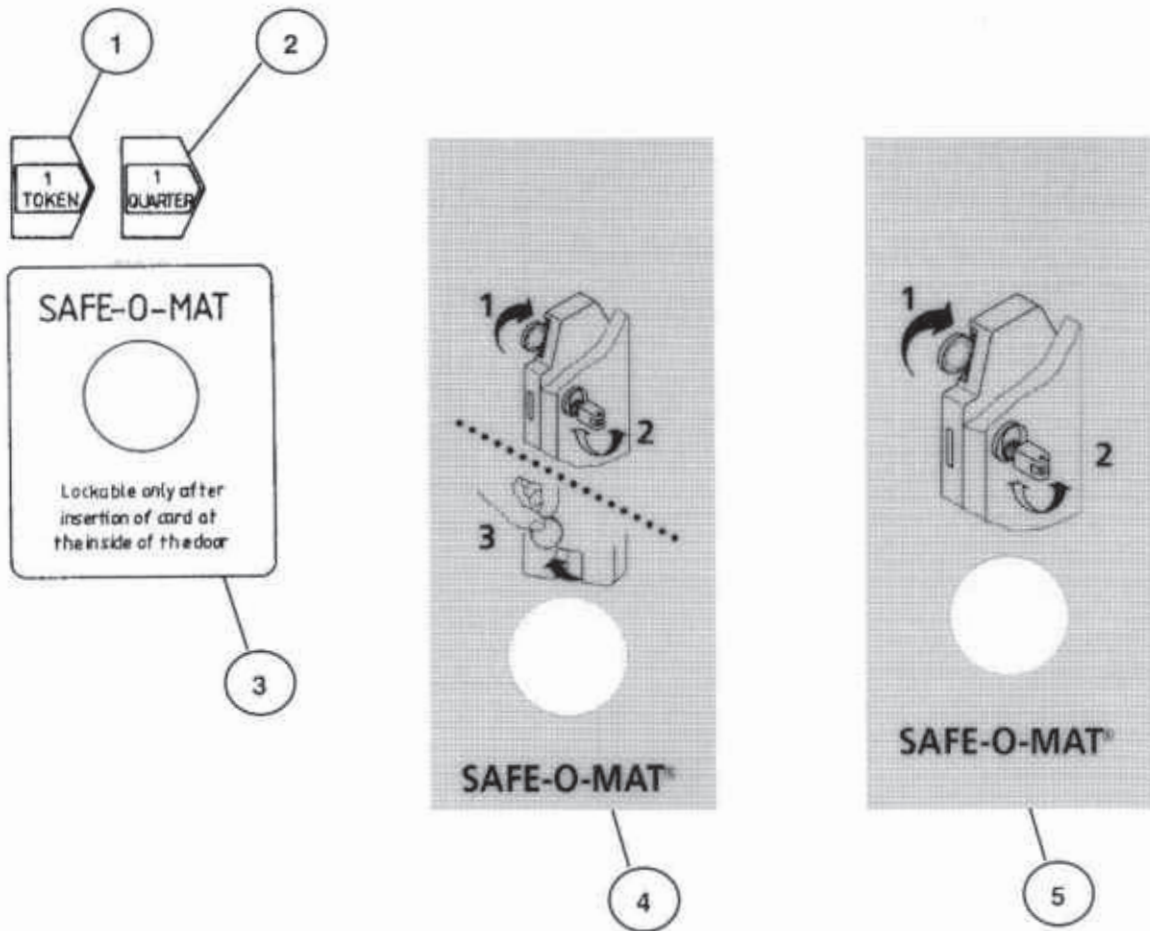
Mounting Parts List:

Item	Number	Description
1	354	Nylon Insert
2	357	Door Strike (angle)
3	358	Door Strike (flush)
4	359	Door Strike Special
5	14440	Card Lock Wood Screw 40 mm
6	35335	Card Lock Mounting Screw 40 mm
7	35312	Collect Lock Mtg Screw 12 mm
8	14416	Wood Screw 16 mm
9	348-TS	Retro Promax Instruction Plate



Decals:

Item	Number	Description
1	531	Decal 1 Token
2	532	Decal 1 Quarter
3	348T	Decal, Retrofit
4		Decal, Coin Return
5		Decal, Coin Collect



Adapters and Accessories:

Item	Number	Description
1	1558-3	Penco Card Lock Adapter
2	1559-3	Penco Strike Plate for Card Lock
3	1559-2	Penco Card Lock Adapter
4		Accessories Outer Information Sign
5		Card Punch
6	521	Brass Security token 1073

HÄFELE

3901 Cheyenne Drive
P.O. Box 4000
Archdale, NC 27263
1-800-423-3531
www.hafele.com