

SYMPHONY

DUET

310.8307.xxx

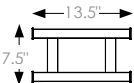
+ 310.8613/23/35/47.02.xxx

FEATURES

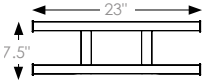
The double bar configuration provides ample space for a guest entryway, behind an office door or as additional hanging storage in a bedroom.

The Duet can be mounted lower on the wall as a stand-alone shoe rack or add another Duet above for backpacks and jackets.

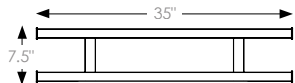
The Symphony Duet is the recommended model for most surface mount installations.



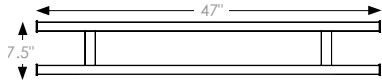
310.8307 + 310.8613.02



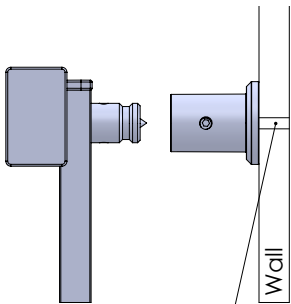
310.8307 + 310.8623.02



310.8307 + 310.8635.02

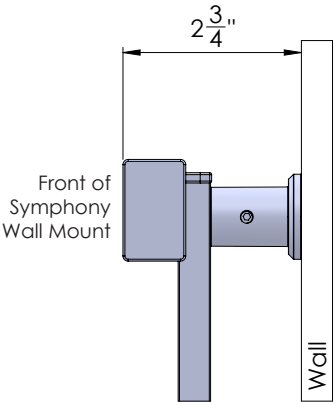


310.8307 + 310.8647.02



Use 3/16 toggle bolts when assembling to drywall

Use #8 wood screws when assembling to wood



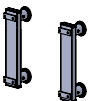
FLEXIBLE INSTALLATION

Attaches quickly and securely into drywall or a vertical panel, no studs required

DIMENSIONS

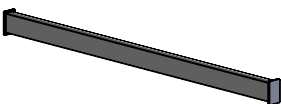
SPECS

VERTICAL MOUNTS (2)



310.8307.(FINISH).xxx

FAUX LEATHER BARS (2)



310.8613.02.(FABRIC).xxx

310.8623.02.xxx

310.8635.02.xxx

310.8647.02.xxx

LOAD CAPACITY

The max. load capacity of a Single Horizontal bar is 50lbs, if the load is evenly spread along the bar.

The max. load capacity of a Full System is 200lbs, if the load is evenly spread along the system. (same limitation for all the sizes)

These tests have been performed on a 1/2 inch drywall, using 3-16 heavy duty toggle bolts and 10-24 steel machine screws.

OPTIONS

FINISH:

MAL

MNL

SG

MG

BLK

MATTE ALUMINUM

MATTE NICKEL

SLATE

MATTE GOLD

BLACK

FAUX LEATHER:

WIN

OYS

PWT

WINTER

OYSTER

PEWTER

WIDTH:

13.5"

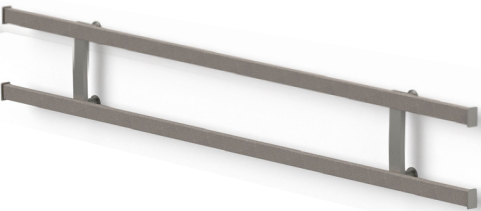
23"

35"

47"

HEIGHT:

7.5"



310.8307.SG

+ 310.8647.02.PWT

FINISHED PRODUCT