

**ORNAMENTAL PRODUCTS**

---

**INSPIRED BY DESIGN**

Always read the instructions completely and carefully before beginning assembly.  
Remove and check contents for damage and / or missing parts.

## Wall Filler

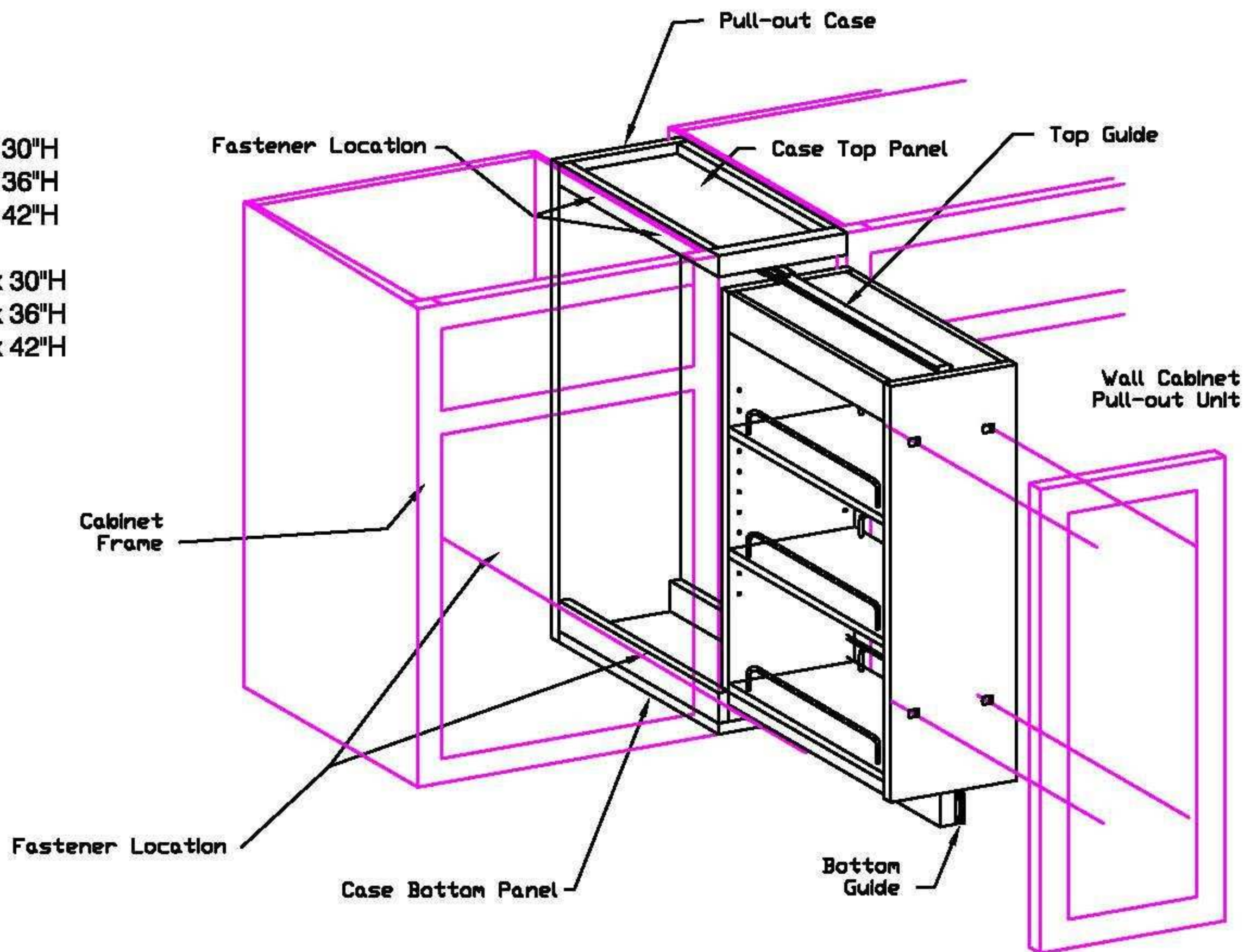
545.47.256	11-1/4"D x 3"W x 30"H
545.47.257	11-1/4"D x 3"W x 36"H
545.47.258	11-1/4"D x 3"W x 42"H
545.47.266	11-1/4"D x 6"W x 30"H
545.47.267	11-1/4"D x 6"W x 36"H
545.47.268	11-1/4"D x 6"W x 42"H

**Contents of Box:**

- 1 - Wall Filler Pull-out
- 8 - Shelf Pins
- 2 - Moveable Shelves

**You will need:**

- Safety Glasses
- Tape Measure
- Screw Driver



## Installation Instructions

**(IMPORTANT! This unit is designed to be used between two 12" deep wall cabinets.)**

- Step 1** Locate the Wall Cabinet Pull-out unit onto the side of the cabinet behind the face frame. **(IMPORTANT! For face frame construction, shims may be needed to bring the cabinet sides even with the edge of the face frame.)**
- Step 2** Attach the Wall Cabinet Pull-out unit to the side of the cabinet using nails or screws. Install the fasteners thru the inside top of the cabinet into the case top panel of the pull out unit. Then install fasteners from inside the cabinet just above the bottom shelf into the bottom frame of the pull out unit. (See above drawing for typical location of fasteners.) **(IMPORTANT! Make sure that during the installation process the Wall Cabinet Pull-out unit stays in the closed position so that it will open and close properly after installation.)**
- Step 3** Repeat steps 1 & 2 for other side to connect between the two cabinets.
- Step 4** Make sure the Wall Filler Pull-out unit moves in and out easily then attach the cabinet door to the pull-out unit making sure that it is centered to the cabinet. **(IMPORTANT! Use caution on your fastener length so it does not protrude through the face of the door.)**

For more information on additional products offered by Ornamental Products, visit our website at.....


**ornamental products**  
[www.ornaprod.com](http://www.ornaprod.com)