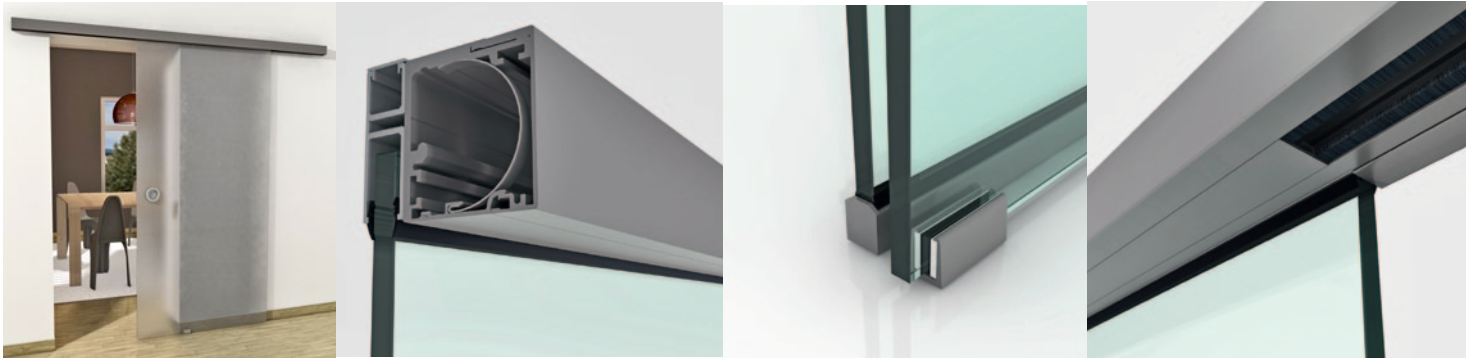


## Classic 40-F to 120-F

The Sliding door fitting for wooden and glass doors



### → Fitting

- One runner geometry for all weight classes (40-120kg)
- No re-working of the glass door required
- for 1 or 2 door leaves
- Teflon-coated bottom guidance
- Assembly-friendly front sided height adjustment
- incl. assembly tools

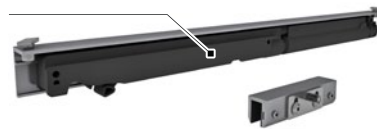
- + Endcaps in aluminium/stainless steel finish
- + Roller carriers for integrated ceiling mounting with tandem roller



### → Extensions

#### Damping:

- Dual-sided cushioning system without glass re-working up to 120kg
- Dual-sided cushioning system for slim doors (up to 50kg => from 530mm width - up to 120kg => from 630mm width)



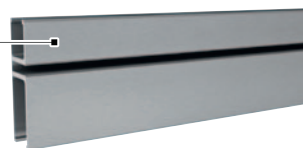
#### Wall compensation unit profile

- For the door frame mounting
- or just as adjustment, flush mounted with homogeneous surface
- Mounting - to be bond on the track



#### Fixed element profile

- Easy mounting to the base track profile (no extra storage costs)
- Glass frame with rubber seal, without silicone, etc.
- Tabel for glass- and profile charging



- + In the near future convenient handles in the same surface as the fitting will be available and
- + a wall mounting adapter for the glass sliding guide as well.