

TECHNICAL DATA SHEET

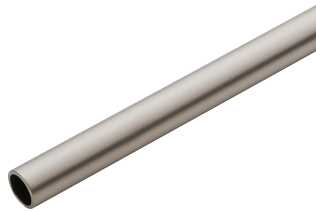
Hampton Inn Graphics Rail (SF.24)

SPLASH & DASH

Tubular Rail

- Length: 1500 mm (59 1/16")

Material: Steel



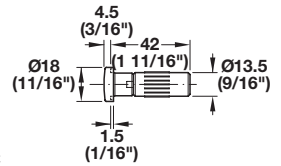
Finish	Item No.
stainless steel	522.40.015



Decorative End Cap

- With flat head

Material: Stainless Steel; Sleeve: Plastic

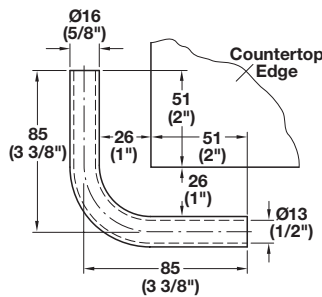


Finish	Item No.
matt	522.42.050



Elbow Section, 90°

Material: Steel



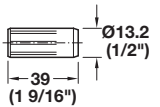
Finish	Item No.
stainless steel	522.41.010



Dowel Connector

- Plugs into kitchen rails and elbow sections

Material: Plastic



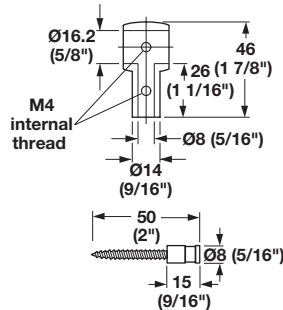
Color	Item No.
white	520.72.090



Railing Posts

- Press-fits over fastening screw

Material: Zinc



Finish	Item No.
stainless steel	522.42.000

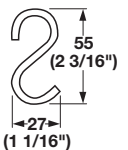
Supplied With

M4 set screw and hex key



S-Hook for Railing

Material: Steel



Finish	Item No.
chrome polished	522.04.207

Note

5 pc. minimum order

For any additional information please contact:

Ty LeFever | 815.315.3410 | ty.lefever@hafele.us